

Mr. Liam English
Premiere Energy
Premier House
Daux Road
BILLINGSHURST
West Sussex
RH14 9SJ

Date: 12 September 2018

Our Ref: 8500097812 / QID 3000015251

Dear Mr. English

Site Address: North Dane Way / Gillingham ME5 8JZ

Thank you for your recent enquiry regarding the above premises. I am writing to you on behalf of South Eastern Power Networks plc the licensed distributor of electricity for the above address trading as UK Power Networks.

I am pleased to be able to provide you with a budget estimate for the work.

It is important to note that this budget estimate is intended as a guide only. It may have been prepared without carrying out a site visit or system studies. No enquiry has been made as to the availability of consents or the existence of any ground conditions that may affect the ground works. It is not an offer to provide the connection and nor does it reserve any capacity on UK Power Networks electricity distribution system.

Budget estimate:

The budget estimation for this work is:

Description

Budget estimate for the connection of 900 new domestic dwellings, EV charging points and a new school with an estimated load requirement of 2505kVA.

High Voltage Point Of Connection

£1,450,000 (exclusive of VAT) if the Point Of Connection (POC) is to our High Voltage network along North Dane Way.

An additional sum may be required for re-enforcement works on the network become necessary, this will be confirmed following a network study that will be completed at the time of the firm quotation.

Load capacity within the area is limited, therefore any quotation within this area may be subject to interactivity.

It will be necessary to establish a new totally enclosed substation on the development site, in situations where a standard GRP substation enclosure can be used, an area of land of at least 4m x 4m will be required. If, however, you prefer to construct a brick substation then an area of land of at least 5m x 5m will be required. Planning

Permission, although not required for a GRP substation, will be required for a brick built enclosure, and it will be your responsibility to obtain this.

The substation must be located such as to minimise the need for the manual handling of heavy plant. The Manual Handling Operations Regulations 1992 require the use of mechanical handling whenever this reasonably practicable. To meet these regulations we use a lorry mounted crane to deliver substation plant. The project must therefore be planned to ensure that it is suitable for the delivery of plant from a large vehicle. The Construction (Design and Management) Regulations 2015 also require that consideration be given to the safe installation, maintenance and eventual removal of equipment. To comply with this legislation we need to be able to gain access with a suitable vehicle throughout the life of the project.

This budget estimate is based on the following assumptions:

- The most appropriate Point of Connection (POC) is as described above.
- A viable cable or overhead line route exists along the route we have assumed between the Point of Connection (POC) and your site.
- In cases where the Point of Connection (POC) is to be at High Voltage, that a substation can be located on your premises at or close to the position we have assumed.
- Where electric lines are to be installed in private land UK Power Networks will require an easement in perpetuity for its electric lines and in the case of electrical plant the freehold interest in the substation site, on UK Power Networks terms, without charge and before any work commences.
- You will carry out, at no charge to UK Power Networks, all the civil works within the site boundary, including substation bases, substation buildings where applicable and the excavation/reinstatement of cable trenches.
- Unless stated in your application, all loads are assumed to be of a resistive nature. Should you intend to install equipment that may cause disturbances on UK Power Networks' electricity distribution system (e.g. motors; welders; etc.) this may affect the estimate considerably.
- All UK Power Networks' work is to be carried out as a continuous programme of work that can be completed substantially within 12 months from the acceptance of the formal offer.

Please note that if any of the assumptions prove to be incorrect, this may have a significant impact on the price in any subsequent quotation. You should note also that UK Power Networks' formal connection offer may vary considerably from the budget estimate. If you place reliance upon the budget estimate for budgeting or other planning purposes, you do so at your own risk.

If you would like to proceed to a formal offer of connection then you should apply for a quotation. Please refer to our website [click here](#) for 'The connection process' which details our application process.

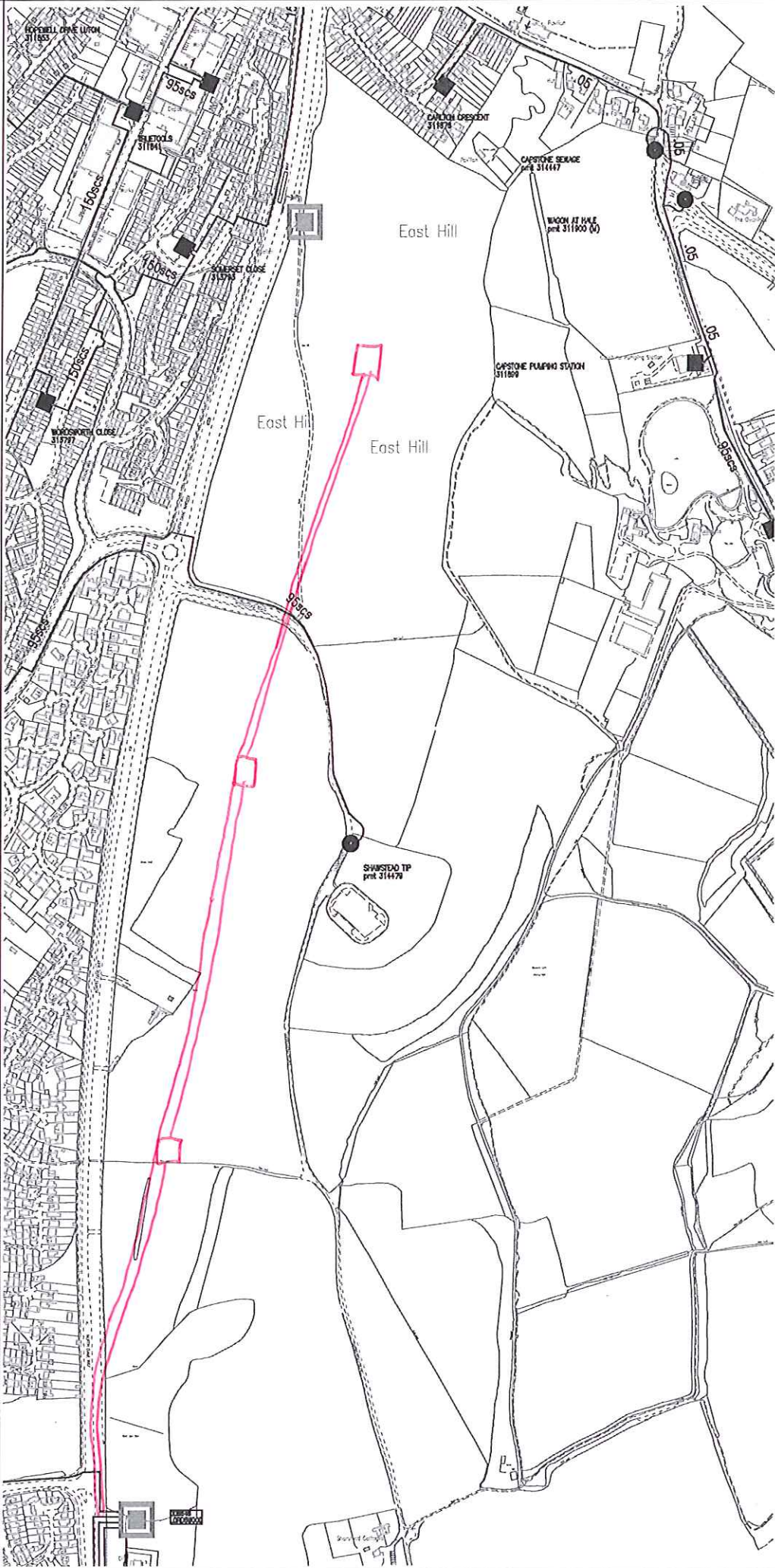
To help us progress any future enquiry as quickly as possible please quote the UK Power Networks Reference Number from this letter on all correspondence.

If you have any questions about your budget estimate or need more information, please do not hesitate to contact me. The best time to call is between the hours of 9am and 4pm, Monday to Friday. If the person you need to speak to is unavailable or engaged on another call when you ring, you may like to leave a message or call back later.

Yours sincerely



Mr. Robert Burke
PARKWOOD INDUSTRIAL ESTATE
Kent, MAIDSTONE
ME15 9XH
01622 352 396
rob.burke@ukpowernetworks.co.uk



<p>UK Power Networks</p> <p>Map Centre: TQ7764NE Scale: 1:5000 (when Plotted as A3) Plotted on: 12/09/2018 Plotted by: Burks, Robert</p>	<p>Plan Provision</p> <p>CHECK IT OUT BEFORE YOU DIG IT OUT EMERGENCY- If you damage a cable or line Phone 0800 065 3786 (24hrs) URGENTLY</p> <p>ALWAYS LOOK UP BEFORE Read to J25 Guidance note C25</p>
<p>The quality and accuracy of any print will depend on your printer, your computer and its print settings. Measurements scaled from this plan may not match measurements between the same points on the ground.</p> <ol style="list-style-type: none"> 1. UK Power Networks does not warrant that the information provided to you is correct. You rely upon it at your own risk. 2. UK Power Networks does not exclude or limit its liability if it causes the death of any person or causes personal injury to any person, or the death of any animal, or damage to property, or any loss of business, or any loss of opportunity, or any loss of profit, or any loss of income, or any loss of reputation, or any loss of goodwill, or any loss of data, or any loss of information, or any loss of opportunity, or any loss of profit, or any loss of income, or any loss of reputation, or any loss of goodwill, or any loss of data, or any loss of information. 3. You are responsible for the security of the information provided to you. It must not be given, sold or made available upon payment of a fee to a third party. 	<p>Grid Ref: TQ 77599 64985 Map Centre: TQ7764NE Scale: 1:5000 (when Plotted as A3) Plotted on: 12/09/2018 Plotted by: Burks, Robert</p> <p>Maps produced at 1:25000 scale are LV Schematic which show LV main cables and overhead lines (in some cases all voltages). Prior to carrying out any work, refer to records to determine the location and depth of all cables and equipment.</p>
<p>1. The position of the apparatus shown on this drawing is believed to be correct but the original landmarks may have been altered since the apparatus was installed. 2. It is essential that all cables are carefully made avoiding the use of mechanical tools prior to excavation using suitable hand tools. 3. All cables must be treated as being live unless proved otherwise by UK Power Networks plant & equipment. Do not use plans more than 3 months after the issue date. 4. Please be aware that electric cables/lines belonging to other owners of licensed electricity distribution systems may be present and it is your responsibility to identify their location.</p> <p>VISITING AN OPEN POINT? Please mark on this plan all locations visited and open points as found, then return updated map to your Business Unit - Thank You.</p>	<p>1. UK Power Networks does not warrant that the information provided to you is correct. You rely upon it at your own risk.</p> <p>2. UK Power Networks does not exclude or limit its liability if it causes the death of any person or causes personal injury to any person, or the death of any animal, or damage to property, or any loss of business, or any loss of opportunity, or any loss of profit, or any loss of income, or any loss of reputation, or any loss of goodwill, or any loss of data, or any loss of information.</p> <p>3. You are responsible for the security of the information provided to you. It must not be given, sold or made available upon payment of a fee to a third party.</p> <p>Contact UK Power Networks on 0800 065 6566 for details of ENVI Cable routes before commencing work.</p> <p>Reproduced by permission of Ordnance Survey on behalf of HMSO. (c) Crown copyright and database right 2018. All rights reserved. Ordnance Survey Licence number 100019450. Data has been added to the Ordnance Survey base map; all proprietary rights in such additional data are and shall remain the exclusive property of (c) South Eastern Power Networks plc or London Power Networks plc each being a distribution licensee under section 6(1) of the Electricity Act 1989 for the relevant distribution services area on that term is defined in such licensee's distribution licence. All rights in such data reserved.</p>

Mr Liam English
Premiere Energy
Premier House
Daux Road
BILLINGSHURST
West Sussex
RH14 9SJ

Date: 19 September 2018

Our Ref: 8200024504 / QID 3200017821

Dear Mr English

Site Address: North Dane Way / Gillingham ME5 8JZ

Thank you for your recent enquiry regarding the above site. I am pleased to be able to provide you with a Quote to carry out the work requested. I am writing to you on behalf of South Eastern Power Networks plc the licensed distributor of electricity for the above address trading as "UK Power Networks".

Overview of Work

This Quote is for an HV connection with an import capacity of 2505.0 kVA to supply the development at the Site Address above.

IDNO application for a point of connection to supply a mixed development.

If you change your mind

This Quote is for the non-contestable elements together with the contestable closing joint as requested, on the basis that you are an IDNO or that you will be using an IDNO. If after accepting this Quote but before the IDNO (or their appointed ICP) has submitted a design for acceptance by UK Power Networks, you decide that you would prefer to use an ICP to carry out the Contestable Works for UK Power Networks to adopt without the use of an IDNO, please write to me providing details. UK Power Networks will then prepare a variation to the Quote to reflect the involvement of the ICP. Any such variation will not be effective until both UK Power Networks and You have signed the variation and you have made any corresponding payment requested.

How much is it going to cost?

UK Power Networks carries out all of the requested Non-Contestable Works and any Contestable Works described in section 1

Price excluding VAT

£37,229.35

Price including VAT

£38,510.04

Provisional Price

I would like to draw to your attention to the provisional nature of the Quote. At the date of issue, the detailed design and/or the procurement have not been completed. We will notify you in writing if the Works, the location of the Electric Lines, the electrical plant, the design, the completion date or the Price needs to be adjusted once the detailed design and the procurement process is complete.

Terms and Conditions

The Quote is subject to version 7 (September 2016) of our **Terms and Conditions For Connection and Diversionary Works** (the “Terms and Conditions”) which you can view [here](#). Alternatively, please let me know if you would like me to send you a copy in the post. The Terms and Conditions create legally binding obligations so it is important that you take the time to read and understand them. The **bold** text in the Terms and Conditions show particularly important provisions. They also contain definitions of terms used in this document and in the linked pages on our website that you may find helpful.

What you need to do next

Before you decide to proceed it is really important that you take note of our **Terms and Conditions**, any **special conditions** detailed below and the details in **Your Information Pack** which includes information contained within the hyperlinked text, all of which constitute your **Quote**.

If you would like to accept this Quote you will need to ensure that the requested payment is in our bank account in full and cleared funds and that we have received your signed Acceptance Form from section 5 below by 5pm on 18 December 2018.

Following acceptance, please email your design documentation, in accordance with Engineering Recommendation G81, for review to connections.gateway@ukpowernetworks.co.uk.

Special Conditions

This offer is subject to the following conditions:

- Planned network reinforcement must have been completed before this work can go ahead
- This offer is based on the use of an approved panel solicitor to complete the associated legal consents for UK Power Networks. Should this not be the case, then the additional costs will need to be added to the Price.

Point(s) of Connection (POC)

The point(s) of connection will be as shown on the proposal plan provided with this Quote.

When can you expect your electricity connection?

Subject to the Terms and Conditions and the Quote the DNO Works referred to in this Quote will be completed on or before 30 June 2019.

We will try to meet your requested dates wherever possible but the completion date will be dependent on:

- The date that the Quote is accepted;
- Any further discussions we may have with you regarding the programming of the Works; and
- The completion of any work by other people or companies (which may include you) that must be done before we can complete our work.

Programming of Works

Please bear in mind that we are not able to programme any work for you until:

- We have received your signed acceptance form and the requested payment;
- All necessary legal consents have been completed successfully; and
- UK Power Networks has approved your design and programme for the Contestable Works.

Interactivity

We have not received a request from any other customer for a connection to the same part of our Distribution System, but to find out what happens if we do, please [click here](#).

If you have any questions about this Quote or need more information, please don't hesitate to contact me.

Yours sincerely



Philip Liddiard

Telephone: 01622 352 309
Mobile: 07875 111 063
Email philip.liddiard@ukpowernetworks.co.uk

Your Information Pack

The following pack provides all of the information you should need to successfully complete your electrical connection for the work you have been quoted. Please pay particular attention to the information that is specific to your project.

Do not hesitate to contact me should you require any further support.

Section 1 The Scope of Works

Section 2 Cost Breakdown

Section 3 Your Responsibilities

Section 4 Information To Help You As You Plan For Your Work

Section 5 Acceptance Form To Proceed With The Works

Section **1** Scope of Works

Please read the details in this section in conjunction with the attached customer proposal plan.

UK Power Networks will carry out the following Contestable and Non-Contestable Works:

Straight joints onto the existing and proposed 11kV mains.
Managing outage associated with the provision of an 11kV substation.
HV shutdown for the associated reinforcement works.
Works within the boundary of Lordswood primary substation to supply and install a 300mm Triplex HV cable to the substation boundary.
HV end box termination within Lordswood Lane South substation.

This Quote is provided on the basis that UK Power Networks will be required to carry out the contestable final closing joint. Please let me know if you change your mind and would like to do this work yourself instead (provided you have the necessary accreditation).

Phases of work

This Quote covers one phase(s) of work.

Section **2** Cost Breakdown

Totals

Net Price (Excluding VAT)	£37,229.35
----------------------------------	-------------------

Breakdown of Costs

Description of CONTESTABLE WORK	
Work involved	Net price (£)
TOTAL	£0.00

Description of CONTESTABLE FINAL CLOSING JOINT WORK	
Work involved	Net price (£)
HV Underground Mains	
<ul style="list-style-type: none"> 11kV 300 Triplex to 95-300 PICAS St Jnt 11kV 300 Triplex to 300 Triplex St Jnt 	£2,980.77
TOTAL	£2,980.77

Description of NON-CONTESTABLE WORK	
Work involved	Net price (£)
HV Plant and Switchgear	
<ul style="list-style-type: none"> Commissioning of a Remote Terminal Unit (RTU) Locks for a shared UKPN/IDNO substation 11kV outage associated with the provision of an 11kV substation 300mm HV indoor end box termination Break down an existing compound 11kV end box and terminate 300mm cable. High voltage shutdown 	£7,781.69
HV Substation Civils	
<ul style="list-style-type: none"> Sand & cap/shingle substation 	£779.23
HV Underground Mains	
<ul style="list-style-type: none"> 11kV Triplex/Single core Pot End 300mm Excavate, lay & reinstate 11kV 300mm aluminium Triplex mains cable in a category 1 or 2 carriageway. Excavate & Reinstate 11kV joint hole in a category 1 or 2 carriageway. 125mm Ridgiduct Solid (supplied in multiples of 2m lengths) Civils groundwork survey 	£22,377.66
Transactional Charges	
<ul style="list-style-type: none"> Assessment Only Charges 	£3,310.00
<ul style="list-style-type: none"> Design Approval Charges 	£0.00
Other charges	
TOTAL	£34,248.58

Please note that payment is required in full, in advance of the work being programmed.

Section **3** Your Responsibilities

This section provides information about the work that you are responsible for should you accept this Quote.

Job Specific Responsibilities

You are responsible for the following Contestable Works:

Requirements
Liaise with the CiC Delivery Manager before starting work.
Design of network extension to include as a minimum the information shown on our web site. Click here
Ensure that any harmonics produced which are transmitted onto the Distribution System are within the limits stated in ENA ER G5/4.
Legal acquisition of cable easements and substations on UK Power Networks' standard documentation without amendments.
Planning permission for a substation with an aerial.
Obtain design acceptance of the Contestable Works from UK Power Networks.
Supply of all materials required for the Contestable Works.
Excavation, cable laying and reinstatement of 2 x 300mm Triplex HV cable route between the points of connection and points of isolation.
Excavation, cable laying and reinstatement of the 1 x 300mm Triplex HV cable route between the points of connection for the associated reinforcement works.
Break open any UK Power Networks' ducts as necessary.
Construction of substations, including earthing, power and lighting.
Installation of substation equipment - RMU with automation on both ring switches.
Supply and installation of a suitable RTU including power.
Cable and substation jointing and fitting.
Joint bays x 3 excavation and permanent reinstatement for cable identification and final connections.
NRSWA compliance including for final connections.
Obtain opening notices and permits.
Project Management, operational safety, Regulation compliance, testing etc.
Submission to UK Power Networks of as laid drawings and test results.
Obtain and provide copies of any required Environmental licences or permits.

We have made all of our general information about your responsibilities available in our Knowledge Library on our internet site at www.ukpowernetworks.co.uk. Links to each of the relevant articles are in the table below. Please let me know if you think we can improve the information we have provided.

You are also responsible for the following:

Subject	Link to our Knowledge Library
G59 Witness Testing	Section 3.15 Click here
Power Factor	Section 3.17 Click here
Active Network Management (ANM) local control requirements for the Flexible Distributed Generation Quote	Section 3.18 Click here
Land rights required from You in connection with land within Your occupation, ownership or control (time to complete the legal work between Your solicitors and UK Power Networks' solicitors associated with acquiring substation sites and easements)	Section 3.19 Click here
Land rights required from others for land in their ownership occupation or control (Land rights over property outside the actual site boundary)	Section 3.23 Click here
Land rights required from others for land in their ownership occupation or control (You are to obtain an agreement in principal from the relevant landowner)	Section 3.24 Click here

Generic Responsibilities Applicable to all Quotes

Subject	Link to our Knowledge Library
Construction (Design & Management) Regulations 2015 (CDM)	Section 3.25 Click here
Appoint an electricity supplier	Section 3.26 Click here
Works to be undertaken by the ICP/IDNO if UK Power Networks is undertaking the non-contestable Works only	Section 3.27 Click here

Section 4 Information to Help You Plan For Your Work

Job Specific Information

Subject	Link to our Knowledge Library
Supply characteristics at the Point of Supply for LV metered and un-metered customers	Section 4.2 Click here
Supply characteristics for HV and EHV Points of Supply	Section 4.3 Click here
Private generation	Section 4.6 Click here
Electricity (Connection Charges) Regulations 2002 / 2017 (Second Comer)	Section 4.7 Click here
Interactive process	Section 4.10 Click here

Generic Information Applicable to all Quotes

Subject	Link to our Knowledge Library
About our Network	Section 4.1.1 Click here
Prospective Short Circuit Current (PSCC)	Section 4.1.4 Click here
Supply disturbances	Section 4.1.6 Click here
Standard leaflets and fact sheets	Section 4.1.8 Click here
Contact us	Section 4.1.9 Click here
Lane rental charges	Section 4.1.10 Click here
Cable identification by ICPs and IDNOs	Section 4.1.14 Click here
Pre and post-connection tests for low voltage contestable works	Section 4.1.15 Click here
Pre and post-connection tests for high voltage contestable works	Section 4.1.16 Click here
Engineering recommendations G81	Section 4.1.17 Click here
Parent Company Guarantee and Bank Guarantee Form	Section 4.1.18 Click here

If you are unhappy with our service please follow our Complaints Procedure Specific to Commercial and Industrial Projects which can be found [here](#). This document details your right to contact Ofgem for a formal determination if we have been unable to resolve the matter to your satisfaction.

Section **5** Acceptance Form

Job Reference: 8200024504 / 3200017821

Site Address: North Dane Way, Gillingham, Kent, ME5 8JZ

Please return both sides of this completed form by post or email:

CC Proj.
UK Power Networks
Metropolitan House
Darkes Lane
Potters Bar, Herts, EN6 1AG

Email: billingteam-networks@ukpowernetworks.co.uk

Cost of Work

UK Power Networks carries out all of the requested Non-Contestable Works and any Contestable Works described in section 1

Price excluding VAT

£37,229.35

Price including VAT

£38,510.04

Payment Profile

I understand that the Price, including VAT, must be paid in full to accept this Quote. I also understand that where VAT has been charged a Tax Invoice for the Price will be issued by UK Power Networks on receipt of payment.

Please indicate your method of payment:



Cheque

Please make cheques payable to **UK Power Networks** and **put our reference number on the back.**



Debit/Credit Card

Please call **0203 282 0610** and have your card to hand. We are sorry we cannot accept American Express/Diners Club.



BACS/CHAPS

Account: HSBC Bank Plc **Sort Code:** 40 05 30 **Account Number:** 02302934
UK Power Networks Ref. Number 3200017821
(You MUST include this reference so we know which job is being paid):

The Invoice Address	Your Site Contact
Name / Company name:	Name / Company name:
Contact name:	Contact name:
Address:	Address:
Telephone:	Telephone:
Email:	Email:

Your Acceptance

I accept your quotation for carrying out the DNO Works in accordance with the Quote.

I have already paid £0.00 inclusive of VAT towards the total price and therefore £38,510.04 remains payable.

To accept this Quote, the signed Acceptance Form and payment in cleared funds must reach UK Power Networks by 5pm on 18 December 2018. Acceptance Forms and payments received after this date may be returned and you will need to request a new Quote.

Signed: _____	Date: _____
Print name: _____	
Agent acting on behalf of: _____	

Job Reference: 8200024504 / 3200017821

Acceptance Form Page 2

Land Rights

If you are appointing a Solicitor to complete any legal work associated with acquiring substation sites and easements work, please provide UK Power Networks with their details by completing the table below.

Please also provide us with the name and address of the owner of any affected land.

Solicitors Information

Name / Company name:

Contact name:

Address:

Telephone:

Email:

Land Owners Information

Name / Company name:

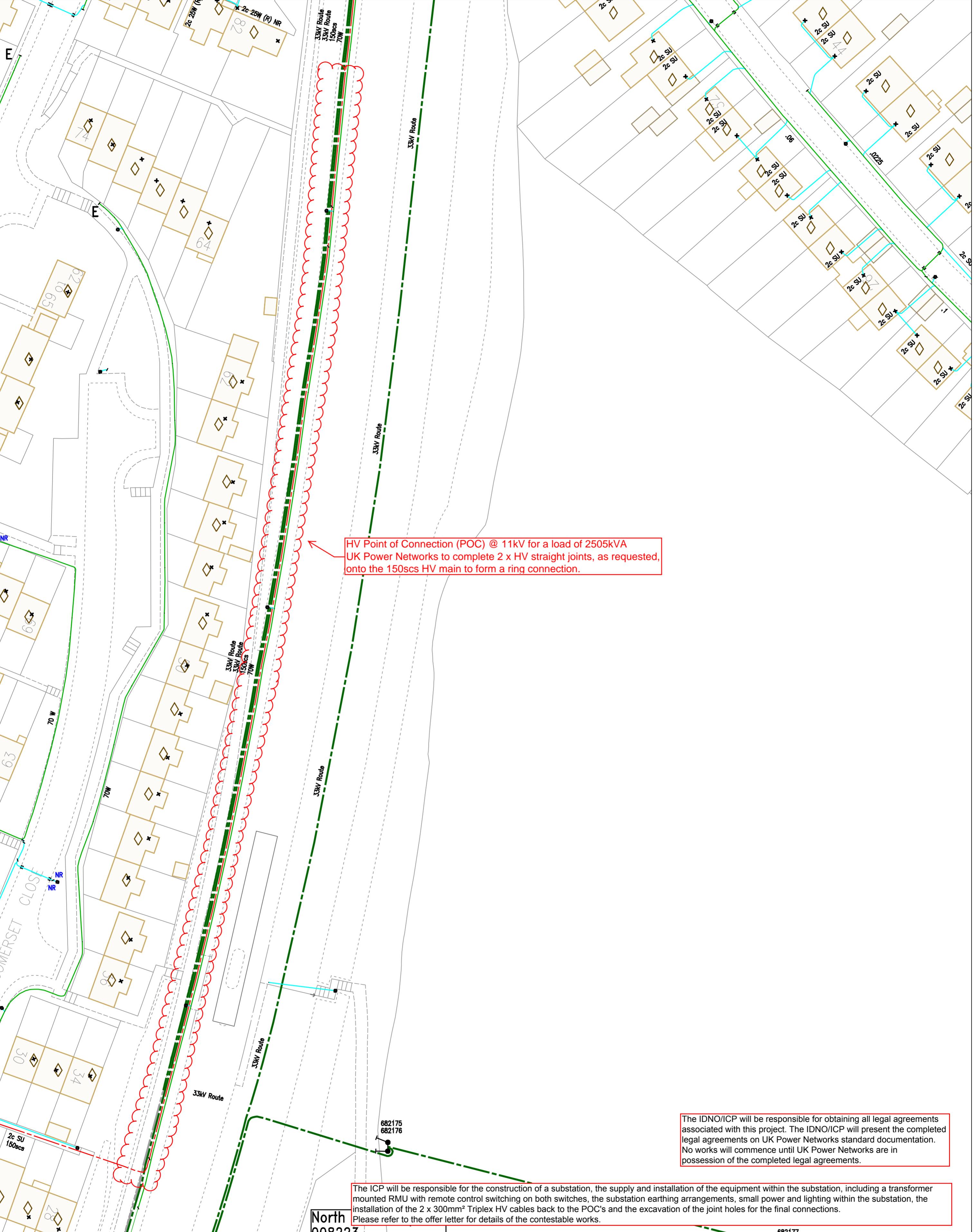
Contact name:

Address:

Telephone:

Email:

Job Reference: 8200024504 / 3200017821



HV Point of Connection (POC) @ 11kV for a load of 2505kVA
 UK Power Networks to complete 2 x HV straight joints, as requested,
 onto the 150scs HV main to form a ring connection.

The IDNO/ICP will be responsible for obtaining all legal agreements associated with this project. The IDNO/ICP will present the completed legal agreements on UK Power Networks standard documentation. No works will commence until UK Power Networks are in possession of the completed legal agreements.

The ICP will be responsible for the construction of a substation, the supply and installation of the equipment within the substation, including a transformer mounted RMU with remote control switching on both switches, the substation earthing arrangements, small power and lighting within the substation, the installation of the 2 x 300mm² Triplex HV cables back to the POC's and the excavation of the joint holes for the final connections. Please refer to the offer letter for details of the contestable works.



The quality and accuracy of any print will depend on your printer, your computer and its print settings. Measurements scaled from this plan may not match measurements between the same points on the ground.

- LV Cable or Line
- HV Cable or Line
- EHV Cable or Line approx. Location
- Duct Ends
- Service Diacon & Street Furniture
- Substation & Link Box

1. The position of the apparatus shown on this drawing is believed to be correct but the original landmarks may have been altered since the apparatus was installed.
 2. The exact position of the apparatus should be verified - use approved cable avoidance tools prior to excavation using suitable hand tools.
 3. It is essential that trial holes are carefully made avoiding the use of mechanical tools or picks until the exact location of all cables have been determined.
 4. It must be assumed that each property and item of street furniture has an electricity supply. Service cables shown only where known.
 5. All cables must be treated as being live unless proved otherwise by UK Power Networks.
 6. The information provided must be given to all people working near UK Power Networks plant & equipment. Do not use plans more than 3 months after the issue date for excavation purposes.
 7. Please be aware that electric cables/lines belonging to other owners of licensed electricity distribution systems may be present and it is your responsibility to identify their location.
- Contact UK Power Networks on 0800 056 5866 for details of EHV Cable routes before commencing work.

1. UK Power Networks does not warrant that the information provided to you is correct. You rely upon it at your own risk.
2. UK Power Networks does not exclude or limit its liability if it causes the death of any person or causes personal injury to a person where such death or personal injury is caused by its negligence.
3. Subject to paragraph 2 UK Power Networks has no liability to you in contract, in tort (including negligence), for breach of statutory duty or otherwise for any loss, damage, cost, claims, demands, or expenses that you or any third party may suffer or incur as a result of using the information provided whether for physical damage to property or for any economic loss (including without limitation loss of profit, loss of opportunity, loss of savings, loss of goodwill, loss of business, loss of use) or any special or consequential loss or damage whatsoever.
4. This plan has been provided to you on the basis of the terms of use set out in the covering letter that accompanies this plan. If you do not accept and/or do not understand the terms of use set out in the covering letter you must not use the plan and you must return it to the sender of the letter.
5. You are responsible for the security of the information provided to you. It must not be given, sold or made available upon payment of a fee to a third party.

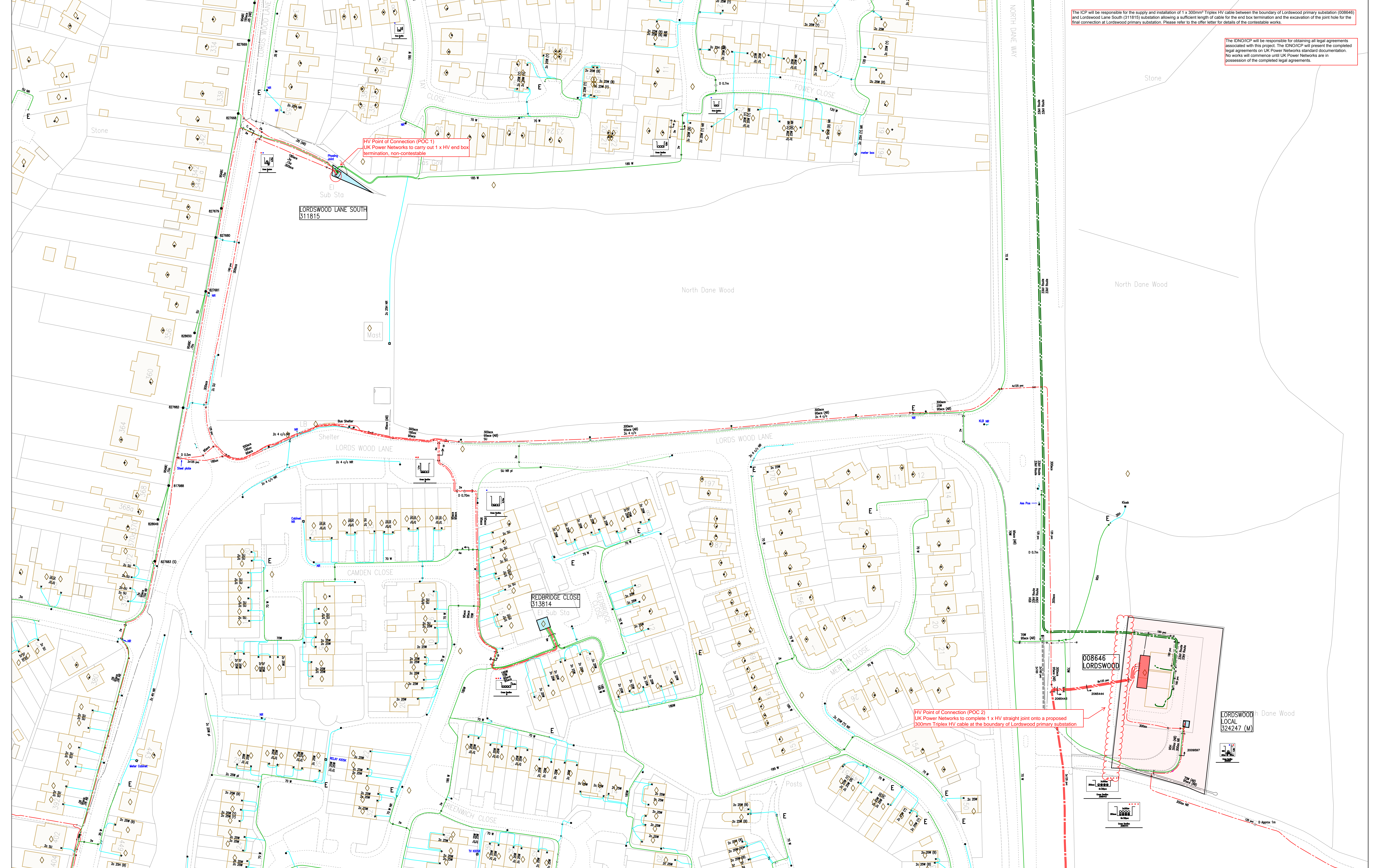
Grid Ref: TQ7765NE
 Scale 1:500
 (When Plotted at A2)
 Plotted on:
 18/09/2018
 Plotted by: Liddiard, Phillip

UK Power Networks

Raster Visibilities:					
Comp	HV	LV	Mains	Ways	
NO	NO	NO	NO	NO	NO

IF IN DOUBT - ASK! PHONE 0800 056 5866
 EMERGENCY - If you damage a cable or line Phone 0800 780 0780 (24hrs)
 URGENTLY

Maps produced at 1:2500 scale are LV Geo-Schematics which show LV mains cables and overhead lines (in some cases all voltages). Prior to carrying out excavations you must refer to the 1:500 records to determine the location of all known underground plant and equipment.



The ICP will be responsible for the supply and installation of 1 x 300mm² Triplex HV cable between the boundary of Lordswood primary substation (008646) and Lordswood Lane South (311815) substation allowing a sufficient length of cable for the end box termination and the excavation of the joint hole for the final connection at Lordswood primary substation. Please refer to the offer letter for details of the contestable works.

The IDNO/ICP will be responsible for obtaining all legal agreements associated with this project. The IDNO/ICP will present the completed legal agreements on UK Power Networks standard documentation. No works will commence until UK Power Networks are in possession of the completed legal agreements.

- 1. The position of the apparatus shown on this drawing is believed to be correct but the original landmarks may have been altered since the apparatus was installed.
- 2. The exact position of the apparatus should be verified - use approved cable avoidance tools prior to excavation using suitable rod tools.
- 3. It is essential that vital holes are carefully made avoiding the use of mechanical tools or picks until the exact location of all cables have been determined.
- 4. It must be assumed that each property and item of street furniture has an electricity supply. Service cables shown only where known.
- 5. All cables must be treated as being live unless proved otherwise by UK Power Networks.
- 6. The information provided must be given to all people working near UK Power Networks plant & equipment. Do not use plans more than 3 months after the issue date for excavation purposes.
- 7. Please be aware that electric cables/lines belonging to other owners of licensed electricity distribution systems may be present and it is your responsibility to identify their location.

The quality and accuracy of any print will depend on your printer, your computer and its print settings. Measurements scaled from this plan may not match measurements between the same points on the ground.

1. UK Power Networks does not warrant that the information provided to you is correct. You rely upon it at your own risk.
 2. UK Power Networks does not exclude or limit its liability if it causes the death of any person or causes personal injury to a person where such death or personal injury is caused by its negligence.
 3. Subject to paragraph 2 UK Power Networks has no liability to you in contract, in tort (including negligence), for breach of statutory duty or otherwise for any loss, damage, cost, claims, demands, or expenses that you or any third party may suffer or incur as a result of using the information provided whether for physical damage to property or for any economic loss (including without limitation loss of profits, loss of opportunity, loss of goods, loss of business, loss of use) or any special or consequential loss or damage whatsoever.
 4. This plan has been provided to you on the basis of the terms of use set out in the covering letter that accompanies this plan. If you do not accept and/or do not understand the terms of use set out in the covering letter you must not use the plan and you must return it to the sender of the letter.
 5. You are responsible for the security of the information provided to you. It must not be given, sold or made available upon payment of a fee to a third party.

VISITING AN OPEN POINT? Please mark on this plan all locations visited and open points as found, then return updated map to your Business Unit - Thank You.
 Contact UK Power Networks on 0800 056 5866 for details of EHV Cable routes before commencing work.
 Maps produced at 1:2500 scale are LV (Green-Schematic) which show LV main cables and overhead lines (in some cases all voltages). Prior to carrying out excavations you must refer to the 1:500 records to determine the location of all known underground plant and equipment.

Plan Provision
 CHECK IT OUT BEFORE YOU DO IT OUT
 CALL 0800 056 5866
 EMERGENCY - if you damage a cable
 Phone 0800 056 5766 (24hrs)
 NIGHTLINE

ALWAYS LOCK UP BEFORE YOU LEAVE WORK
 Refer to HSE Guidance note C58

Grid Ref: TQ 7770 64086
 Map Centre: TQ77645W
 Scale: 1:500
 (When Plotted at A3)
 Plotted on: 18/09/2018
 Plotted by: Liddard, Philip



Premier Energy
Premier House
Daux Road
Billingshurst
West Sussex
RH14 9SJ

Your ref North Dane Lane
Our ref 304520
Date 15 August 2018
Contact searches@southernwater.co.uk
Tel 0845 272 0845
0330 303 0276
Fax 01634 844514

Attention: Liam English

Dear Customer

Re: Provision of public sewer and water main record extract

Location: North Dane Lane, Gillingham, Kent, ME5 8JZ

Thank you for your order regarding the provision of extracts of our sewer and/or water main records. Please find enclosed the extracts from Southern Water's records for the above location.

We confirm payment of your fee in the sum of £61.92 and enclose a VAT receipt for your records.

Customers should be aware that there are areas within our region in which there are neither sewers nor water mains. Similarly, whilst the enclosed extract may indicate the approximate location of our apparatus in the area of interest, it should not be relied upon as showing that further infrastructure does not exist and may subsequently be found following site investigation. Actual positions of the disclosed (and any undisclosed) infrastructure should therefore be determined on site, because Southern Water does not accept any responsibility for inaccuracy or omission regarding the enclosed plan. Accordingly it should not be considered to be a definitive document.

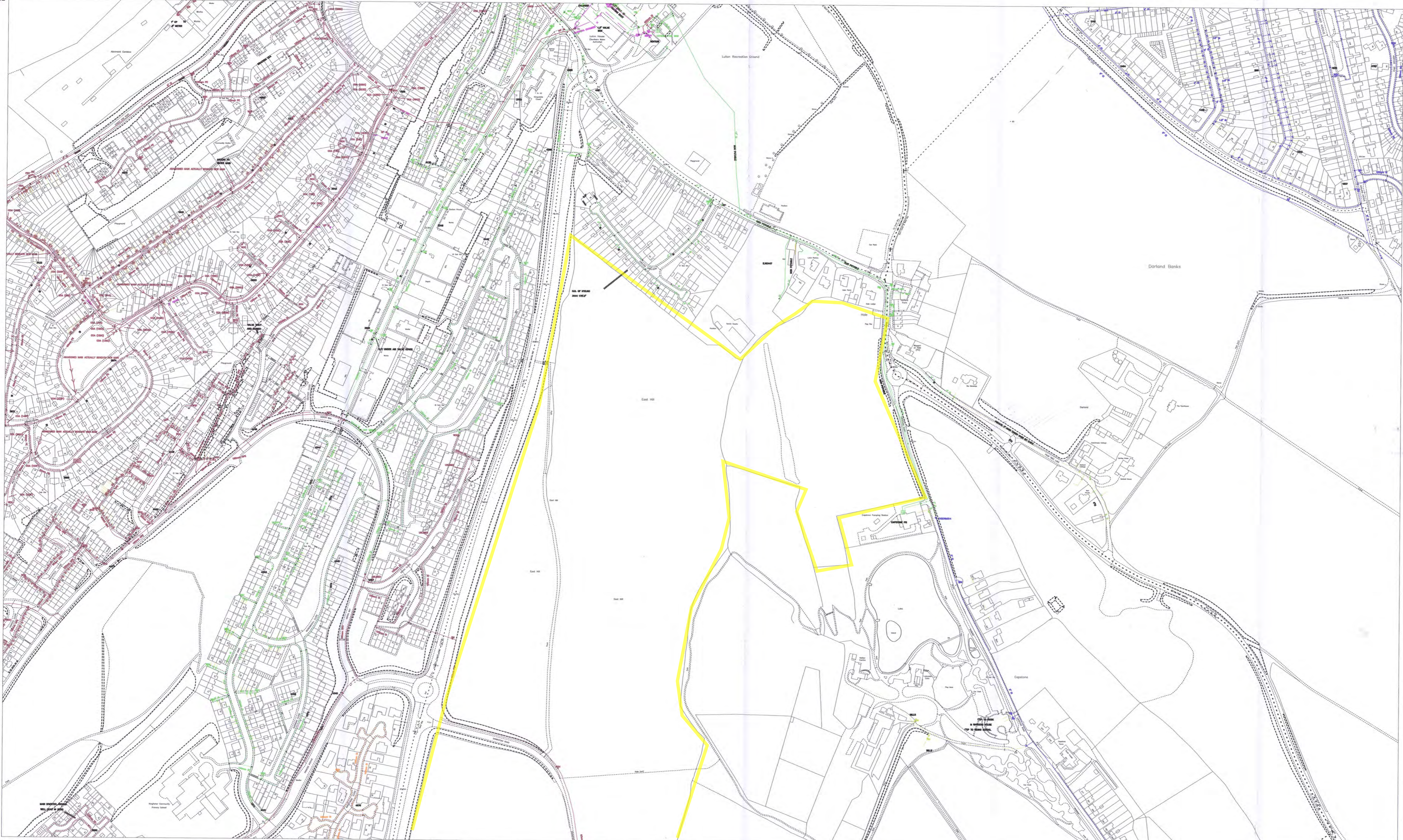
Should you require any further assistance regarding this matter, please contact the LandSearch team.

Yours faithfully

LandSearch

166242

SOUTHERN WATER SERVICES LIMITED



165077

52/9/15

LEGEND - MAINS		MATERIALS	
—	Distribution Main / Communication pipe	□	Delayed machine
—	Trunk Main	□	Aluminium
—	Raw water main	□	Cast iron
—	Non potable	□	Steel (grey) iron
—	Abandoned main	□	Concrete
—	Proposed Main	□	Ductile iron
—	Fire main	□	Bonded Asbestos Cement
—	Non SWS	□	Glass reinforced plastic
—	Slack valve	□	Discontinuous Polypropylene chloride
—	Closed valve	□	Polyethylene
—	Air valve	□	Steel
—	Butterfly valve	□	Concrete segments (total)
—	Pressure reducing valve	□	Concrete segments (unlabelled)
—	Reflex valve	□	Galvanised iron
—	Manhole valve	□	Ductile sheave
—	Fire hydrant	□	Concrete pre-stressed
—	Washout hydrant	□	High performance polyethylene
—	Meter	□	Unknown
—	Capped end	□	
—	Emptying plug	□	
—	Stopcock	□	
—	Leak Nitrite Corrosion Survey Point	□	
—	Anode	□	
—	Telemetry cable	□	
—	Access point / hatchbox	□	
—	Change node	□	
—	Pumping station	□	
—	Booster station	□	
—	Inversion Flow Meter Point	□	
—	Water tower	□	
—	Service reservoir	□	
—	Water Supply Works	□	
—	Born hole / Flat state	□	
—	Customer site	□	
—	Dead insertion point	□	

O.S. Ref.	Drawn by: yadvava
TQ7765NE	Scale: 1:2500
	Date: 15/08/2018
Title: 304520_North Dane Lane, Gill-1	

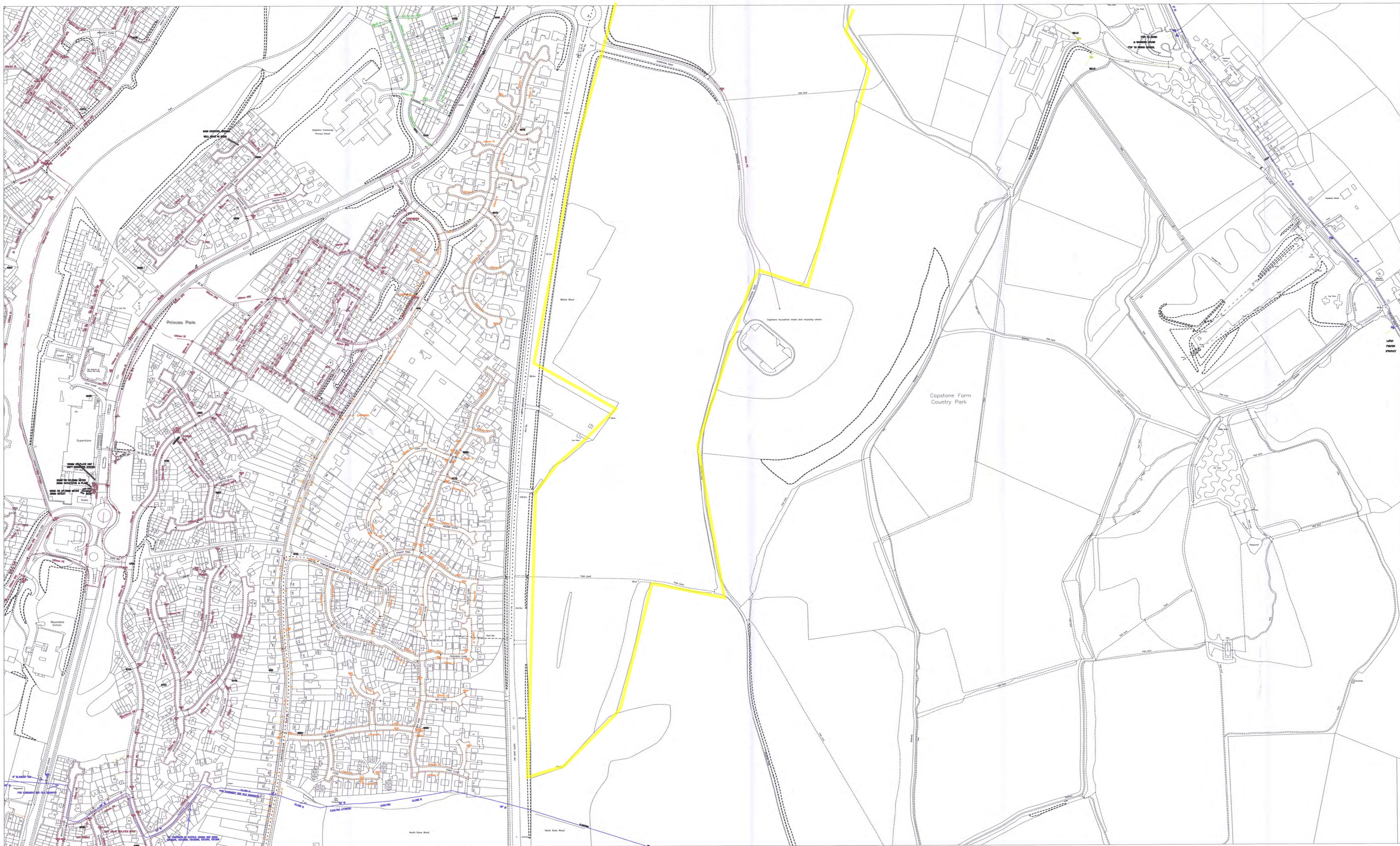
The positions of pipes shown on this plan are believed to be correct, but Southern Water Services Ltd accept no responsibility in the event of inaccuracy. The actual position of pipes must be determined on site.

WARNING: SAC pipes are constructed of Bonded Asbestos Cement
WARNING: Unknown (UNK) materials may include Bonded Asbestos Cement

Based upon Ordnance Survey Digital Data with the permission of the Controller of H.M.S.O. Crown Copyright Reserved Licence No. WU298530

578685

165295



164130
575522

LEGEND - MAINS	
	Clockwise closing valve
	Fire Hydrant
	Washout
	Washout hydrant
	Manor
	Clipped end
	Emptying plug
	Stopcock
	Leak Noise Correlator Survey Point
	Acnode
	Telemetry cable
	Access point / hatchbox

MATERIALS	
	Aluminium
	Cast iron
	Spun (grey) iron
	Concrete
	Ductile iron
	Bonded Asbestos Cement
	GRP
	Glass reinforced epoxy
	(Single/Double) Polyvinyl chloride
	Polyethylene
	PE
	Steel
	ST
	Concrete segments uncoated
	CSU
	Galvanneal iron
	GI
	Ductile-iron
	SI
	Concrete pre-stressed
	CPS
	High performance polyethylene
	HPE
	Unknown
	??

O.S. Ref.
TQ7764NW

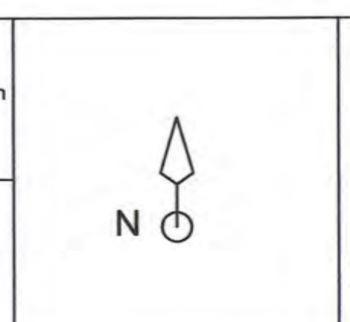
Drawn by: yadavsa
Scale: 1:2500
Date: 15/08/2018

Title: 304520_North Dane Lane, Gill-2

The positions of pipes shown on this plan are believed to be correct, but Southern Water Services Ltd accept no responsibility in the event of inaccuracy. The actual position of pipes must be determined on site.

WARNING: BAC pipes are constructed of Bonded Asbestos Cement
WARNING: Unknown (UNK) materials may include Bonded Asbestos Cement

Based upon Ordnance Survey Digital Data with the permission of the Controller of H.M.S.O. Crown Copyright
Reserved Licence No. WU298530



578442

SOUTHERN WATER SERVICES LIMITED

164400

163235



578442

578382

LEGEND - MAINS

— Distribution Main / Communication pipe	● Clockwise closing valve
— Trunk Main	● Fire Hydrant
— Raw water main	— Washout
— Non-potable	— Washout hydrant
— Abandoned main	— Meter
— Proposed Main	— Clipped end
— Fire main	— Water tower
— Non SWS	— Emptying plug
— Slack valve	— Stopcock
— Closed valve	— Leak Noise Correlator Survey Point
— Air valve	— Anode
— Butterfly valve	— Telemetry cable
— Pressure reducing valve	— Access point / hatchbox
— Relief valve	
— Motorised valve	

□ Delayed reaction	Alkathene
■ Drank pressure tank	Cast iron
▲ Change node	Spun (grey) iron
▲ Pumping station	Concrete
▲ Booster station	Ductile iron
▲ Insertion Flow Meter Point	Bonded Asbestos Cement
▲ Water tower	Glass reinforced plastic
▲ Service reservoir	Glass reinforced epoxy
▲ Water supply works	(Unplasticised) Polyvinyl chloride
▲ Box hole / Well	PVC
▲ Inlet	PE
▲ Customer site	Steel
▲ Sewer inspection point	Concrete segments bolted
	Concrete segments unbolted
	Galvanneal iron
	GI
	Ductile sleeve
	OS
	Concrete pre-stressed
	CPS
	High performance polyethylene
	HPE
	Unknown
	UT

MATERIALS

AK	Alkathene
CI	Cast iron
SI	Spun (grey) iron
CO	Concrete
DI	Ductile iron
BAC	Bonded Asbestos Cement
GPP	Glass reinforced plastic
GEP	Glass reinforced epoxy
PVC	(Unplasticised) Polyvinyl chloride
PE	Polyethylene
ST	Steel
CSB	Concrete segments bolted
CSU	Concrete segments unbolted
GI	Galvanneal iron
OS	Ductile sleeve
CPS	Concrete pre-stressed
HPE	High performance polyethylene
UT	Unknown

O.S. Ref.
TQ7763NW

Drawn by: yadvava

Scale: 1:2500

Date: 15/08/2018

Title: 304520_North Dane Lane, Gill-3

The positions of pipes shown on this plan are believed to be correct, but Southern Water Services Ltd accept no responsibility in the event of inaccuracy. The actual position of pipes must be determined on site.

WARNING: BAC pipes are constructed of Bonded Asbestos Cement
WARNING: Unknown (UNK) materials may include Bonded Asbestos Cement

Based upon Ordnance Survey Digital Data with the permission of the Controller of H.M.S.O. Crown Copyright Reserved Licence No. WU298530

