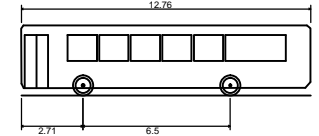
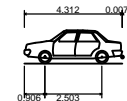


Notes



Modulo-12-76
 Overall Length 12.760m
 Overall Width 2.550m
 Overall Body Height 3.102m
 Min Body Ground Clearance 0.337m
 Track Width 2.500m
 Lock to Lock Time 4.00s
 Kerb to Kerb Turning Radius 9.879m



Medium Sized Car
 Overall Length 4.319m
 Overall Width 1.686m
 Overall Body Height 1.468m
 Min Body Ground Clearance 0.228m
 Max Track Width 1.591m
 Lock to Lock Time 4.00s
 Kerb to Kerb Turning Radius 5.042m

Rev	Amendments	Drm	Chk	App	Date
B	Southbound Bus cage extended to 31m & northbound parking bays extended to 12m	DH	JW	JW	Nov 2014
A	Southbound Bus cage extended forward 5m	DH	JW	JW	Oct 2014

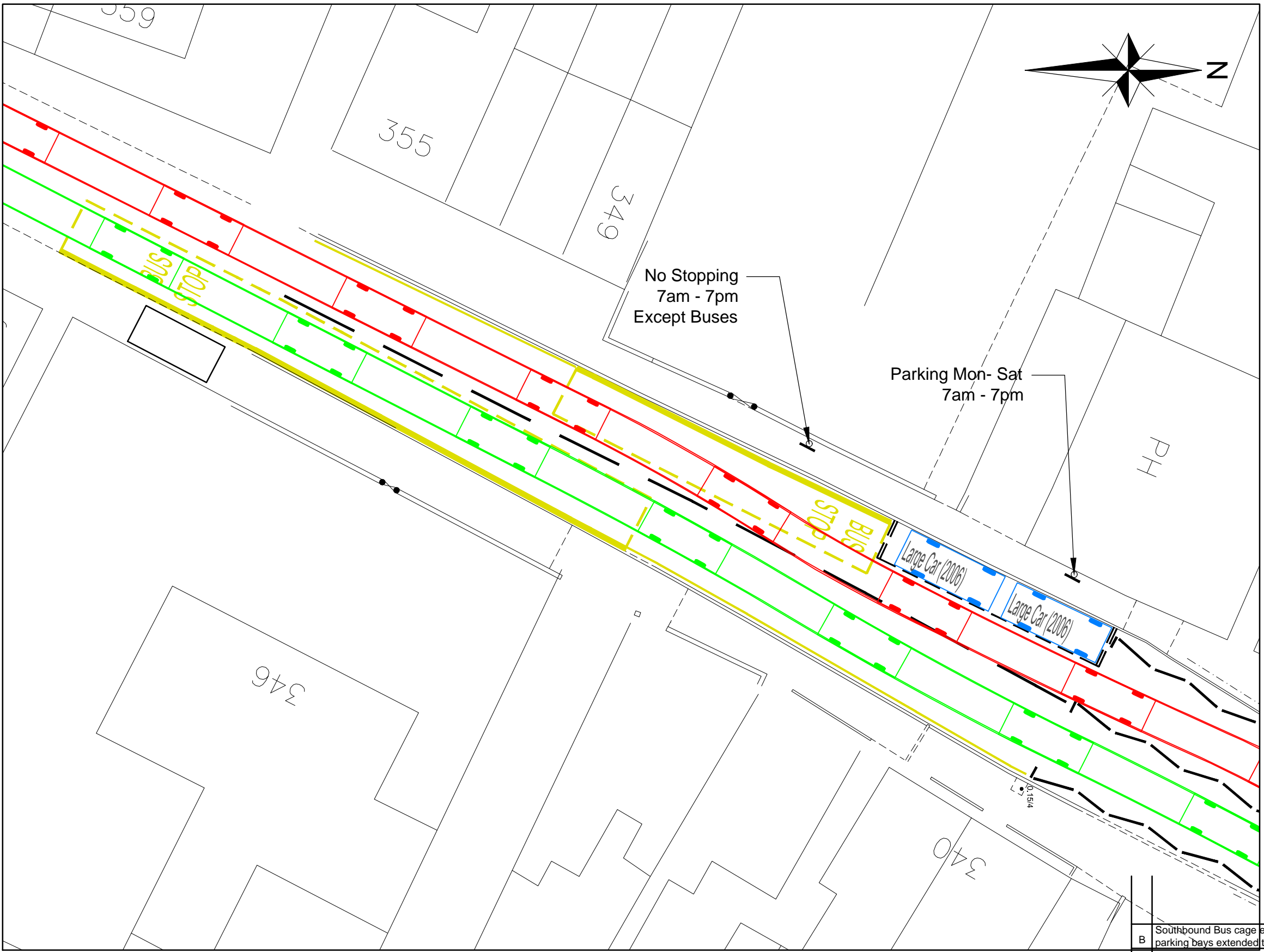


OFFICE 17
 WEALDEN PLACE
 BRADBOURNE VALE ROAD
 SEVENOAKS KENT
 TN13 3QQ
 Telephone: 01732 448120
 Fax: 01732 465026
 Email: enquiries@c-a.uk.com
 Web: www.c-a.uk.com

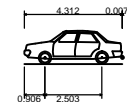
Job Title
Land at Station Road, Walmer
 Drawing Title
Proposed Changes on Dover Road - Opt 2

Client
Taylor Wimpey

Scale 1:200@A3	Date June 14	Designed DH
Drawn DH	Checked JBW	Approved JBW
Job No 12-015	Drawing No 12-015-108	Rev B



Notes



Medium Sized Car	4.319m
Overall Length	1.886m
Overall Width	1.466m
Overall Body Height	0.228m
Min Body Ground Clearance	1.591m
Max Track Width	4.00s
Lock to Lock Time	5.042m
Kerb to Kerb Turning Radius	

Rev	Amendments	Drm	Chk	App	Date
B	Southbound Bus cage extended to 31m & northbound parking bays extended to 12m	DH	JW	JW	Nov 2014
A	Southbound Bus cage extended forward 5m	DH	JW	JW	Oct 2014



OFFICE 19
HART HOUSE
PRIESTLEY ROAD
BASINGSTOKE
HAMPSHIRE RG24 9PU

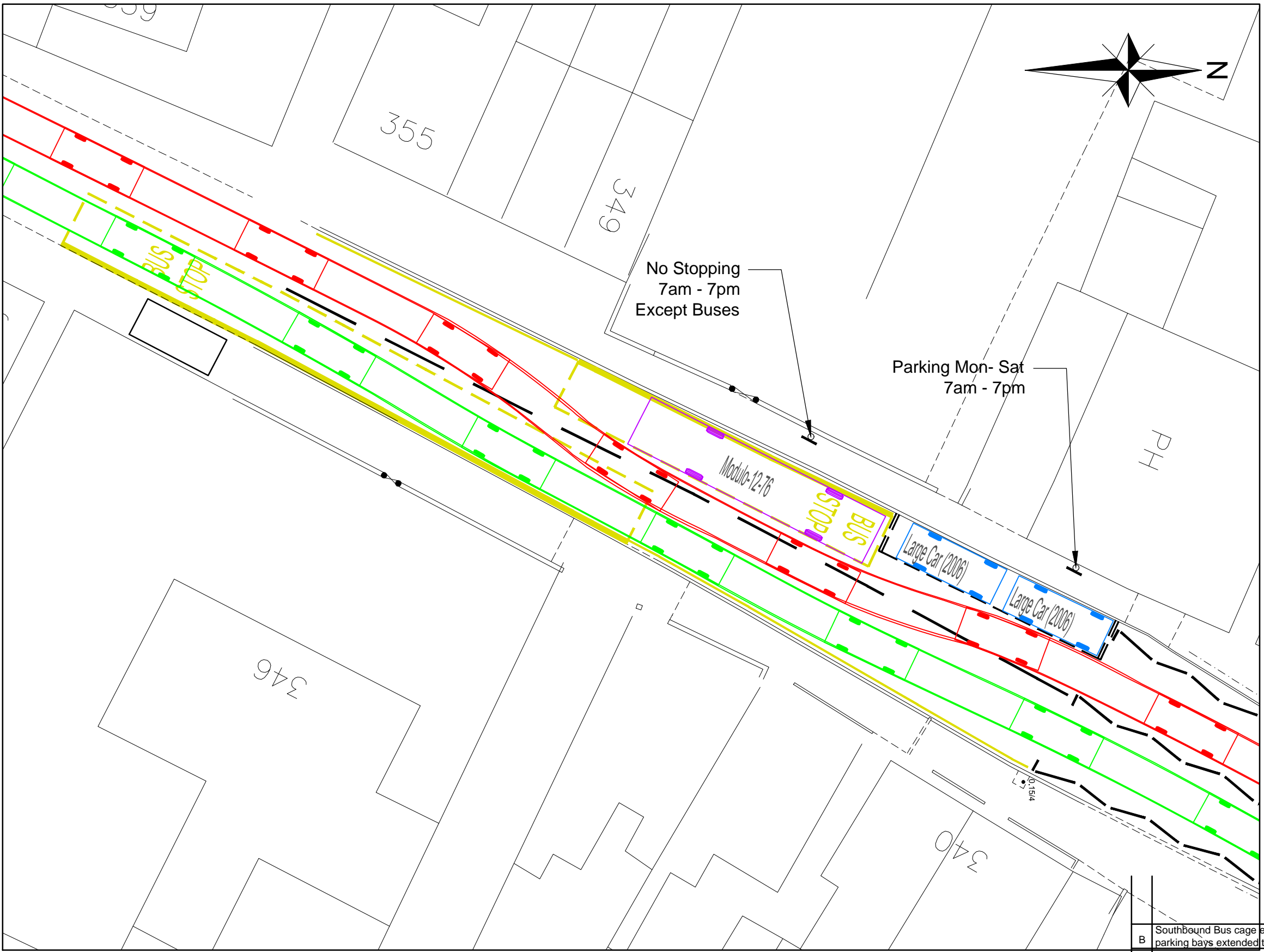
Telephone: 01256 630830
Fax: 01256 324943
Email: enquiries@c-a.uk.com
Web: www.c-a.uk.com

Job Title
Land at Station Road, Walmer

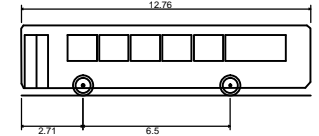
Drawing Title
**Proposed Changes on Dover road - Opt 2
Two-Way Medium Car Swept Path Analysis**

Client
Taylor Wimpey

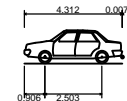
Scale	Date	Designed
1:500	June 14	DH
Drawn	Checked	Approved
DH	JW	JW
Job No	Drawing No	Rev
12-015	12-015/108_TR1	B



Notes



Modulo-12-76
 Overall Length 12.760m
 Overall Width 2.550m
 Overall Body Height 3.102m
 Min Body Ground Clearance 0.337m
 Track Width 2.500m
 Lock to Lock Time 4.00s
 Kerb to Kerb Turning Radius 9.879m



Medium Sized Car
 Overall Length 4.319m
 Overall Width 1.886m
 Overall Body Height 1.468m
 Min Body Ground Clearance 0.228m
 Max Track Width 1.591m
 Lock to Lock Time 4.00s
 Kerb to Kerb Turning Radius 5.042m

No Stopping
 7am - 7pm
 Except Buses

Parking Mon- Sat
 7am - 7pm

RH

Modulo-12-76

BUS STOP

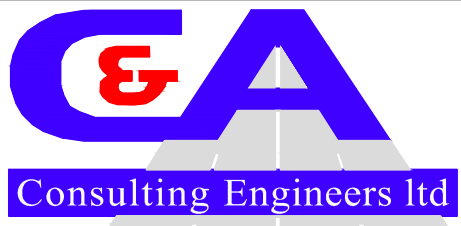
Large Car (2006)

Large Car (2006)

346

340

B	Southbound Bus cage extended to 31m & northbound parking bays extended to 12m	DH	JW	JW	Nov 2014
A	Southbound Bus cage extended forward 5m	DH	JW	JW	Oct 2014
Rev	Amendments	Drm	Chk	App	Date

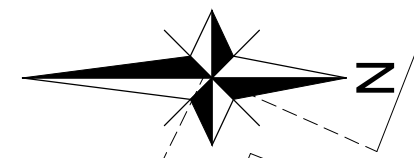
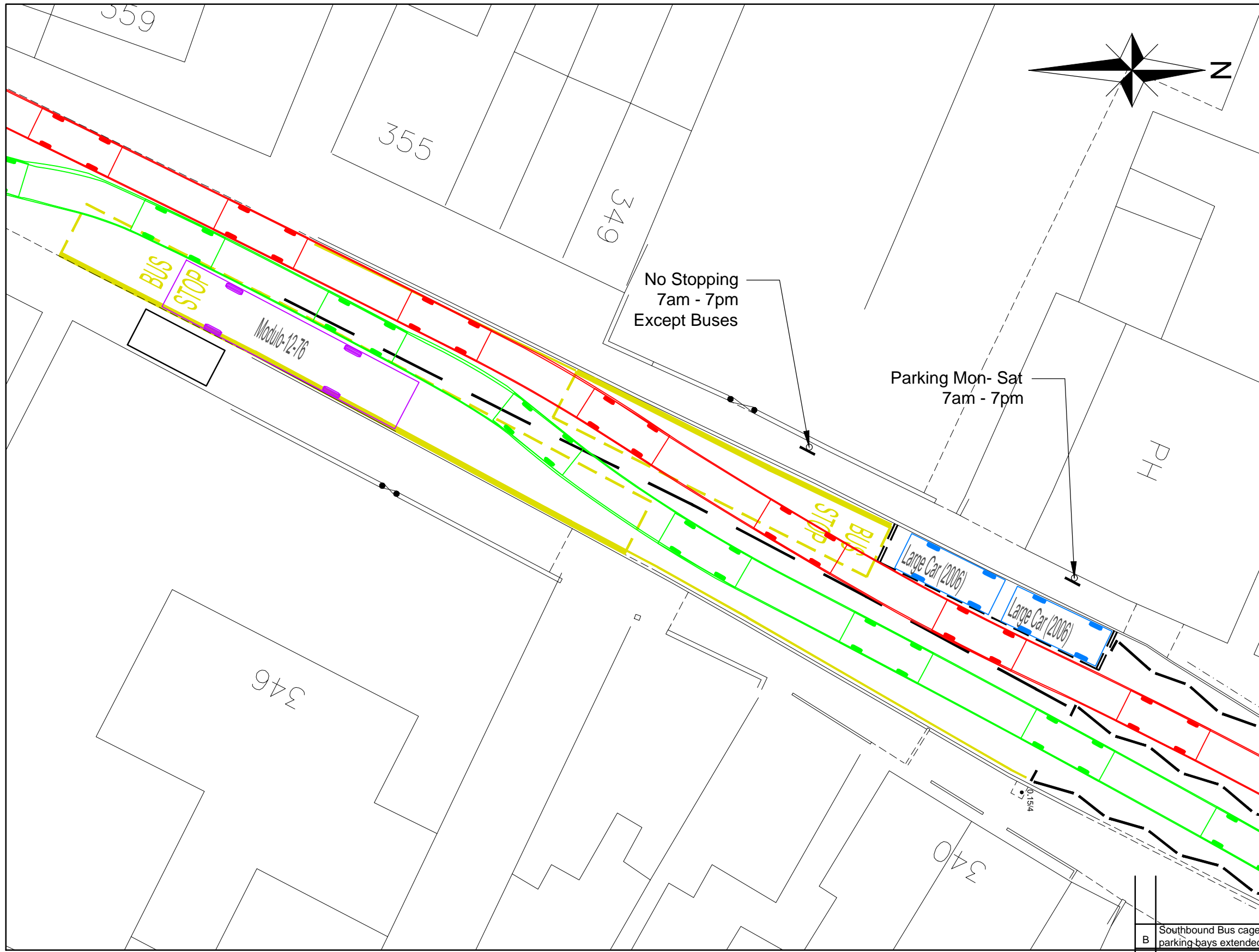


OFFICE 19
 HART HOUSE
 PRIESTLEY ROAD
 BASINGSTOKE
 HAMPSHIRE RG24 9PU
 Telephone: 01256 630830
 Fax: 01256 324943
 Email: enquiries@c-a.uk.com
 Web: www.c-a.uk.com

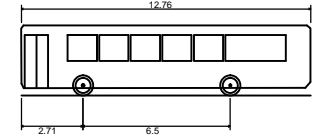
Job Title
Land at Station Road, Walmer
 Drawing Title
**Proposed Changes on Dover road - Opt 2
 Southbound Bus Stop Occupied**

Client
Taylor Wimpey

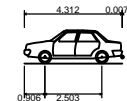
Scale 1:500	Date June 14	Designed DH
Drawn DH	Checked JW	Approved JW
Job No 12-015	Drawing No 12-015/108_TR2	Rev B



Notes



Modulo-12-76
 Overall Length 12.760m
 Overall Width 2.550m
 Overall Body Height 3.102m
 Min Body Ground Clearance 0.337m
 Track Width 2.500m
 Lock to Lock Time 4.00s
 Kerb to Kerb Turning Radius 9.879m



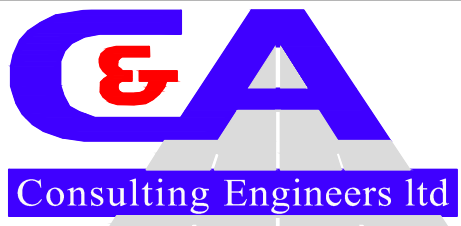
Medium Sized Car
 Overall Length 4.319m
 Overall Width 1.686m
 Overall Body Height 1.466m
 Min Body Ground Clearance 0.228m
 Max Track Width 1.591m
 Lock to Lock Time 4.00s
 Kerb to Kerb Turning Radius 5.042m

No Stopping
 7am - 7pm
 Except Buses

Parking Mon- Sat
 7am - 7pm

RH

Rev	Amendments	Drm	Chk	App	Date
B	Southbound Bus cage extended to 31m & northbound parking bays extended to 12m	DH	JW	JW	Nov 2014
A	Southbound Bus cage extended forward 5m	DH	JW	JW	Oct 2014

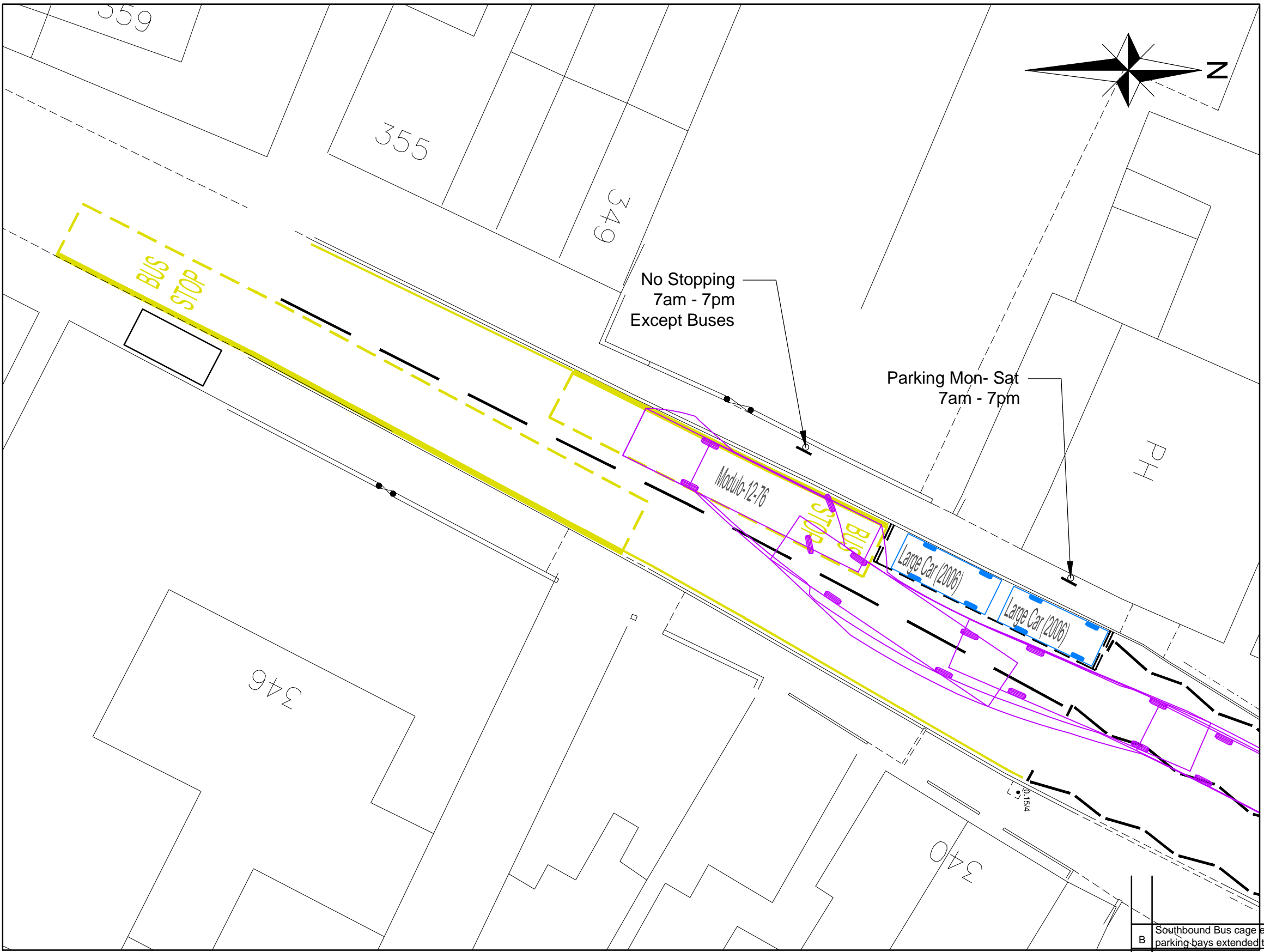


OFFICE 19
 HART HOUSE
 PRIESTLEY ROAD
 BASINGSTOKE
 HAMPSHIRE RG24 9PU
 Telephone: 01256 630830
 Fax: 01256 324943
 Email: enquiries@c-a.uk.com
 Web: www.c-a.uk.com

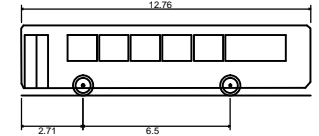
Job Title
Land at Station Road, Walmer
 Drawing Title
**Proposed Changes on Dover road - Opt 2
 Northbound Bus Stop Occupied**

Client
Taylor Wimpey

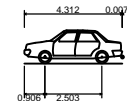
Scale	Date	Designed
1:500	June 14	DH
Drawn	Checked	Approved
DH	JW	JW
Job No	Drawing No	Rev
12-015	12-015/108_TR3	B



Notes



Modulo-12-76
 Overall Length 12.760m
 Overall Width 2.550m
 Overall Body Height 3.102m
 Min Body Ground Clearance 0.337m
 Track Width 2.500m
 Lock to Lock Time 4.00s
 Kerb to Kerb Turning Radius 9.879m



Medium Sized Car
 Overall Length 4.319m
 Overall Width 1.886m
 Overall Body Height 1.468m
 Min Body Ground Clearance 0.228m
 Max Track Width 1.591m
 Lock to Lock Time 4.00s
 Kerb to Kerb Turning Radius 5.042m

Rev	Amendments	Drm	Chk	App	Date
B	Southbound Bus cage extended to 31m & northbound parking bays extended to 12m	DH	JW	JW	Nov 2014
A	Southbound Bus cage extended forward 5m	DH	JW	JW	Oct 2014



OFFICE 19
 HART HOUSE
 PRIESTLEY ROAD
 BASINGSTOKE
 HAMPSHIRE RG24 9PU
 Telephone: 01256 630830
 Fax: 01256 324943
 Email: enquiries@c-a.uk.com
 Web: www.c-a.uk.com

Job Title
Land at Station Road, Walmer
 Drawing Title
**Proposed Changes on Dover road - Opt 2
 Northbound Bus Stop Egress**

Client
Taylor Wimpey

Scale	Date	Designed
1:500	June 14	DH
Drawn	Checked	Approved
DH	JW	JW
Job No	Drawing No	Rev
12-015	12-015/108_TR4	B