

Landscape Plant Schedule						
Trees						
Number	Abbreviation	Species	Common Name	Height	Girth	Specification
8 -	ILEXNRS	Ilex Nellie R. Stevens		3.0-3.5m		CG; Rooftop trained on frame 1.5m x 1.5m
2 -	LIQSTSS	Liquidambar styraciflua 'Slender Silhouette'			8-10cm	CG
3 -	MALBA	Malus baccata			14-16cm	RB
1 -	POPNI	Populus nigra	Black Poplar		12-14cm	CG; certified

Conifers						
Number	Abbreviation	Species	Height	Specification	Density	
65 -	TAXBA	Taxus baccata	60-80cm	Trough / Strip / RB / CG	0.25Ctr	

Shrubs						
Number	Abbreviation	Species	Height	Pot Size	Specification	Density
313 -	Carbbe	Carpinus betulus	60-80cm	5L	Trough / Strip / RB / CG	0.25Ctr
74 -	HEBEG	Hebe 'Emerald Green'	30-40cm	3L	CG	0.4Ctr
79 -	Hm	Hypericum moserianum	30-40cm	3L	CG	0.4Ctr
6 -	LAU NOB	Laurus nobilis	80-100cm	15L	CG; Topiary Cone	No.
4 -	LAU NOB	Laurus nobilis	80-100cm		Topiary 1/2 standard	Counted
59 -	LAVST	Lavandula stoechas	30-40cm	3L	CG	0.25Ctr
28 -	PHOFRB	Photinia fraseri 'Birmingham'	60-80cm	5L	CG	No.
109 -	PIOL	Prunus laurocerasus 'Otto Luyken'	30-40cm	3L	CG	0.4Ctr

Bulbs				
Number	Abbreviation	Species	Bulb Size	Density
25 -	AIGI	Allium 'Globemaster'	10	10/m²

Grass Areas			
Weight	Seed Mix Name	Seed Mix Supplier	Density
3017 g	EL1 Flowering Lawn Mixture	Emorsgate	25g/m²

Mixed Native Hedge Mix 2						
Number	Abbreviation	Species	Height	Specification	Pot Size	Density
45 -	CORSA	Cornus sanguinea	80-100cm	OG	5L	0.3Ctr Double Staggered at 0.3m offset
107 -	Cav	Corylus avellana	80-100cm	OG	5L	0.3Ctr Double Staggered at 0.3m offset
36 -	Ia	Ilex aquifolium	60-80cm	CG	5L	0.3Ctr Double Staggered at 0.3m offset
36 -	VIBOP	Viburnum opulus	80-100cm	OG	5L	0.3Ctr Double Staggered at 0.3m offset
Total :224 -						

Communal Area Mix 1						
Number	Abbreviation	Species	Height	Pot Size	Specification	Density
6 -	CHOTE	Choisya ternata	40-60cm	5L	Bushy :5 brks	5/m²
6 -	CaE	Cornus alba 'Elegantissima'	60-80cm	5L	Branched :5 brks	5/m²
6 -	PITTETT	Pittosporum tenuifolium 'Tom Thumb'	20-30cm	5L	Bushy :5 brks	5/m²
6 -	RfSG	Rudbeckia fulgida sullivantii 'Goldsturm'		5-7.5L	CG	5/m²
6 -	VIMI	Vinca minor		5-7.5L	Several shoots :5 brks	5/m²
Total :30 -						

Communal Area Mix 2						
Number	Abbreviation	Species	Height	Pot Size	Specification	Density
12 -	DAPODAU	Daphne odora 'Aureomarginata'	40-60cm	8L	CG :Branched	4/m²
12 -	FATJAVA	Fatsia japonica 'Variegata'	60-80cm	10L		4/m²
12 -		Hedera hibernica	30-40cm	2L	Bushy	4/m²
12 -	HELNI	Helleborus niger		3L		4/m²
12 -	SKIJANY	Skimmia japonica 'Nymans'	30-40cm	3L	Bushy	4/m²
Total :60 -						

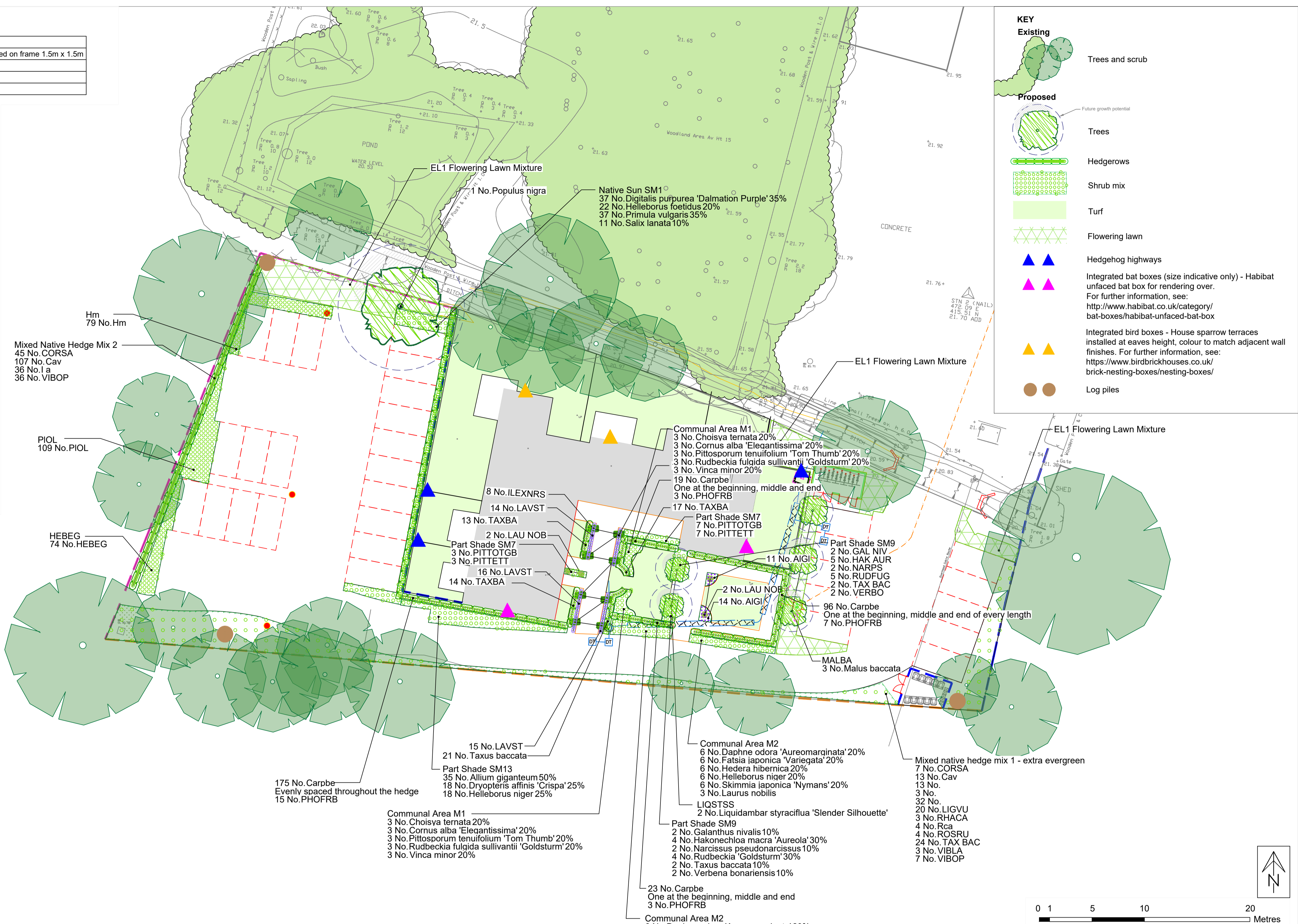
Native Sun SM1						
Number	Abbreviation	Species	Height	Pot Size	Specification	Density
37 -		Digitalis purpurea 'Dalmation Purple'		1-1.5L	CG	4/m²
22 -	HELLFO	Helleborus foetidus		3L	CG	4/m²
37 -	PRIVU	Primula vulgaris		1-1.5L	CG	4/m²
11 -	SALLA	Salix lanata		5-7.5L	CG	4/m²
Total :107 -						

Part Shade SM7						
Number	Abbreviation	Species	Specification	Density	Height	Pot Size
10 -	PITTOTGB	Pittosporum tenuifolium 'Goldball'	Bushy	4/m²	40-60cm	5L
10 -	PITTETT	Pittosporum tenuifolium 'Tom Thumb'	Bushy :7 brks	4/m²	40-60cm	5L
Total :20 -						

Part Shade SM9						
Number	Abbreviation	Species	Height	Pot Size	Specification	Density
4 -	GAL NIV	Galanthus nivalis			CG	4/m²
9 -	HAK AUR	Hakonechloa macra 'Aureola'		2L	CG	4/m²
4 -	NARPS	Narcissus pseudonarcissus			CG	4/m²
9 -	RUDFUG	Rudbeckia 'Goldsturm'		2L	CG	4/m²
4 -	TAX BAC	Taxus baccata	60-80cm		CG :RB Topairy ball	4/m²
4 -	VERBO	Verbena bonariensis		2L		4/m²
Total :34 -						

Part Shade SM13						
Number	Abbreviation	Species	Specification	Density	Weight	Percentage Contribution
35 -	Alg	Allium giganteum	CG	4/m²		50%
18 -	DRY AFC	Dryopteris affinis 'Crispa'	CG	4/m²		25%
18 -	HELNI	Helleborus niger	CG	4/m²		25%
Total :71 -						

Mixed Native Hedge Mix 1 extra evergreen						
Number	Abbreviation	Species	Height	Pot Size	Specification	Density
7 -	CORSA	Cornus sanguinea	80-100cm		OG	1Ctr
13 -	Cav	Corylus avellana	80-100cm		OG	1Ctr
13 -		Crataegus monogyna	80-100cm		OG	1Ctr
3 -		Euonymus europaeus	80-100cm		OG	1Ctr
32 -		Ilex aquifolium	40-60cm	5L	CG	1Ctr
20 -	LIGVU	Ligustrum vulgare	80-100cm		OG	1Ctr
3 -	RHACA	Rhamnus cathartica	80-100cm		OG	1Ctr
4 -	Rca	Rosa canina	80-100cm		OG	1Ctr
4 -	ROSRU	Rosa rubiginosa	80-100cm		OG	1Ctr
24 -	TAX BAC	Taxus baccata	80-100cm	10L	RB :CG	1Ctr
3 -	VIBLA	Viburnum lantana	80-100cm		OG	1Ctr
7 -	VIBOP	Viburnum opulus	80-100cm		OG	1Ctr
Total :133 -						



NOTES
Timetable
 The proposals will be implemented in accordance with the landscape planting plan and in the next planting season (October-March) post completion of the construction and thereafter maintained and retained as below.

Topsoil
 Topsoil imported to the site to be multi purpose topsoil to BS 3882:2015 with a minimum of 6% organic matter by dry weight.

i) Topsoil 150mm deep over 450mm deep thoroughly broken up subsoil for grass areas
 ii) Topsoil 300mm deep over 600mm deep thoroughly broken up subsoil for shrubs

i) Topsoil 300mm deep over 900mm deep thoroughly broken up subsoil for trees
 All tree pits to have Terracottem Arbor 3-1-7+ micro nutrients Fertiliser added to soil within tree pit. Application Rate: 1.5g / litre of soil.

Planting
 All plants to be to National Plant Specification and BS8545:2014. Trees from nursery to independence in the landscape. Recommendations and handled and planted to Handling and Establishing Landscape Plants (CPSE, 1994).
 Trees to be staked with using a three multiple stake system. Stakes to be positioned around the rootball an equal distance from the tree trunk. The tree is to be secured to the stakes with biodegradable hessian tree ties such as 'Holdfast Natural Tree Tie' (or similar approved) to be used. The tree tie is to be threaded from the stake, around the tree trunk and back to the same stake. This is done separately for each of the three stakes. Ties to be checked every four weeks and secured as necessary.
 All trees in soft landscape (10-12cm girth +) to have RootRain Urban irrigation system to be supplied and installed to manufacturer's instructions after planting of each tree or watering bags (TreeGator watering bag or similar approved) to be used. Watering regime to comply with BS 8545:2014 recommendations (Annex G: Guidance on post planting management and maintenance).

Groups of shrubs to be planted with an unplanted area of a minimum of 500 mm between each group. Shrubs to be planted at least 300mm from road or footpath kerbs.
 Hedges to be planted as specified with an unplanted area each side as shown on the drawing.
 All hedge plants to be protected by 600mm environmentally friendly spiral tree rabbit guards, such as 'Green-Tech Rainbow Treebio Biodegradable Spiral Guard', fixed with 900mm bamboo cane. Ilex protected by biodegradable guard such as, 'True Traders Natural Jute Barrier Netting (fully compostable)' supported by bamboo canes.

Mulching
 Plant beds to be mulched with 100mm deep green waste compost, mulch grade, to PAS 100 or 100mm conifer bark mulch 100mm down with a maximum of 20% fines (below 5mm). Hedge planting locations to be mulched with mulch matting such as 'Greenfix Mulch Mat by Green-Tech' or similar approved to help maintenance and irrigation requirements.

Management
 All new planting to be watered as required to maintain it in a healthy condition during the critical first established season. Recommendations and handled and planted to Handling and Establishing Landscape Plants (CPSE, 1994).
 In future years watering to be undertaken as required to maintain healthy and vigorous growth.
 All dead or dying back trees or shrubs to be replaced with plants to same specification in November following losses.
 All areas to be maintained weed free for a minimum of five years with a maximum of four weeks weed growth at any one time.
 Tree stakes to be removed in fourth growing season if possible or the following April. Side branches and basal shoots on trees to be removed each July to maintain a 2m trunk free of branches.
 Shrub planting to be maintained below 600mm high in visibility splays and sight lines.
 Shrubs to be cut back where overhanging paved areas in March each year.

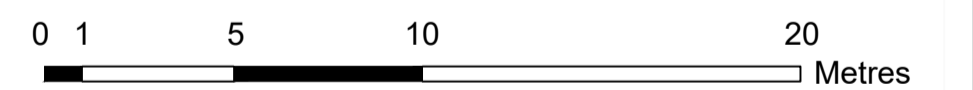
KEY

Existing

- Trees and scrub

Proposed

- Future growth potential
- Trees
- Hedgerows
- Shrub mix
- Turf
- Flowering lawn
- Hedgehog highways
- Integrated bat boxes (size indicative only) - Habitat installed at eaves height, colour to match adjacent wall finishes. For further information, see: <http://www.habitat.co.uk/category/bat-boxes/habitat-unfaced-bat-box>
- Integrated bird boxes - House sparrow terraces installed at eaves height, colour to match adjacent wall finishes. For further information, see: <https://www.birdbrickhouses.co.uk/brick-nesting-boxes/nesting-boxes/>
- Log piles



HW & CO
 01622 437196 | lydia@hwandco.co.uk | www.hwandco.co.uk
 2 Keswick Drive, Maidstone, Kent ME16 0DD | Hill-Wood & Co (Kent) Ltd Company no. 10066666

PLANNING

Project: **TALLOW COURT, HEADCORN**

Drawing title: **Landscape Planting Plan**

Rev	Description	Date
-	-	-
-	-	-
-	-	-

Scale: **1:200@A1** | Date: **Jun 2022** | Drawing number: **0535/22/B/20** | Rev: **1:400@A3**