

- Proposal for an Eco Holiday Park -

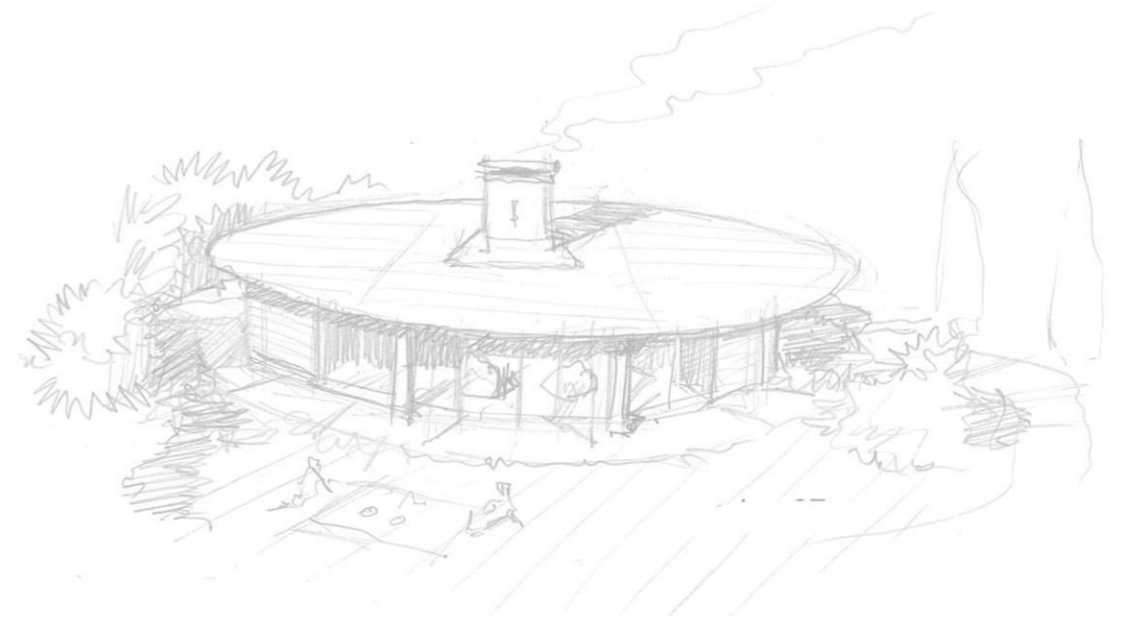
Canterbury Road, Densole, Near Folkestone





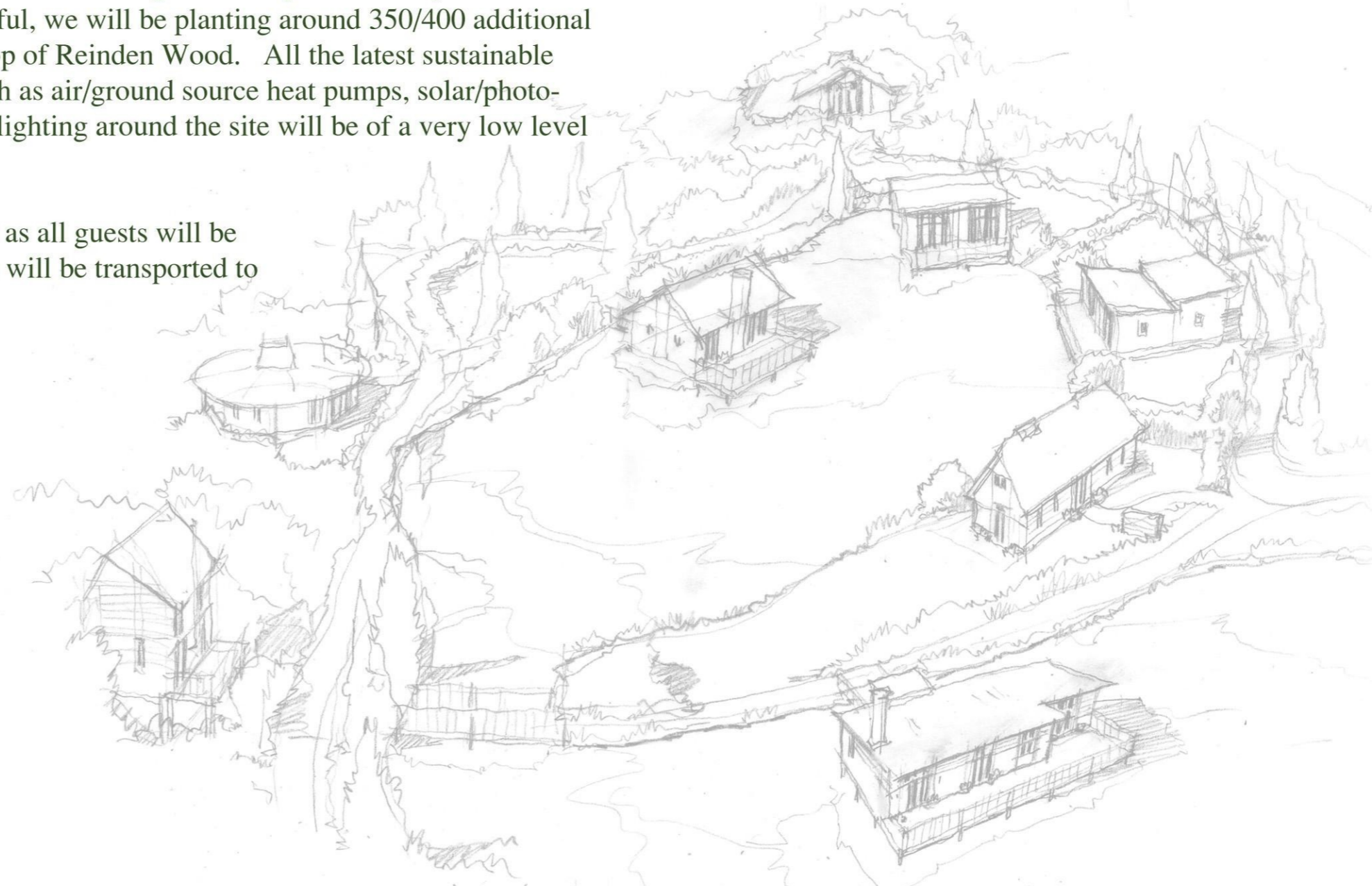
We are a local couple who have lived in the Swingfield Area for 40 years. We have successfully run large businesses in Folkestone, Canterbury and Swingfield throughout this time providing local employment and economic benefit to many people and trades.

We are currently making a planning application that will be coming before you shortly. This is for an Eco Holiday and Fishing park to be developed on low grade grassland at Densole Farm. The vision is for 12 x 5* luxury lodges to be set around two connecting fishing lakes. All the lodges will be accessible to provide fully inclusive accommodation for all.



The high quality design has been carefully planned to ensure that all lodges are fully screened by intensive planting of indigenous trees and hedges. In fact, if successful, we will be planting around 350/400 additional trees so that the site will blend seamlessly with the backdrop of Reinden Wood. All the latest sustainable methods will be used in the construction of the project, such as air/ground source heat pumps, solar/photo-voltaic panels, highly efficient log burners etc. The safety lighting around the site will be of a very low level type so there will be no light pollution.

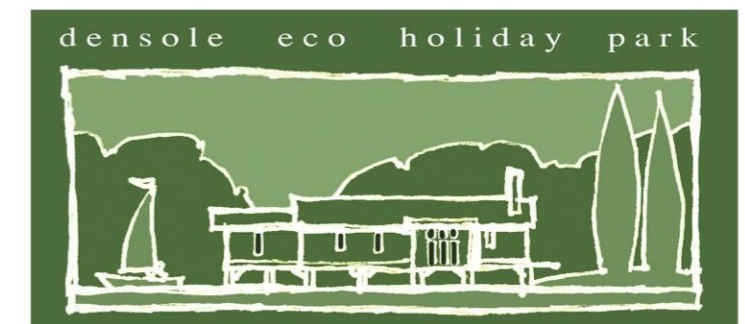
There will be minimal vehicles movements within the park as all guests will be required to leave their vehicles in the car park. The guests will be transported to their lodges via specially adapted golf carts.



During the planning stages we have worked very closely with the Head of Strategic Developments for Shepway Council together with various experts to produce a scheme that will have a negligible visual impact on the area. The site will enhance the environment for the benefit of wildlife, and due to the limited amount of lodges the traffic movements onto the A260 will not cause any adverse traffic problems.

All the reports may be viewed in full alongside the Design and Access statement once the application has been registered with the Planning Department.

Individually designed, sustainably built lodges



We understand that the area is in an AONB, however many such holiday lodge resorts have been built in AONBs throughout the country as they offer people the opportunity of enjoying and immersing themselves fully in AONBs.

We have discovered many lodge parks in AONBs such as

- www.coastallodges.co.uk- Coastal Lodges At Gara Mill, South Devon AONB
- www.crowhurstpark.co.uk- Crowhurst Park Holiday Village, Battle, Sussex AONB
- www.bluewoodlodges.com- Bluewood Lodges, Kingham, Oxfordshire, Cotswolds
- www.parkdeanholidays.co.uk- West Bay Holiday Park, Bridport, Dorset
- www.lakeviewmanor.co.uk- Lakeview Manor Lodges, Dunkeswell, Honiton, Devon
- www.blackhalllodges.co.uk- Black Hall Lodges, Llanfair Waterdine, Shropshire Hills AONB
- www.otterfalls.co.uk- Otter Falls, Upottery, Devon
- www.highlandsendholidaypark.co.uk- Highlands End Holiday Park, West Dorset.
- www.parmontleylodges.co.uk- Parmontley Hall Country Lodges, Hexham, N Pennines AONB
- www.woodovis.com- Woodovis Park, Woodovis House, Tavistock, Tamar Valley AONB
- www.nottermill.co.uk- Notter Mill Country Park, Notter Bridge, Saltash, Cornwall

This list goes on and on all these sites are in AONBs.

All of these parks bring a boost to rural economies.

The forming of two new lakes and wild meadow planting will, we are sure, be a magnet for wildlife and can only enhance the AONB. For your information we have included a few concept designs so that you may get a feel of what we are hoping to achieve.

In the current local District Plan the Council recognises the need for high quality visitor accommodation for economic and local tourism benefits.

We do hope that as one of our Local Councillors you will back this exciting plan as we are sure you will agree the local economy, wildlife and ecology can only benefit from the scheme.

David & Lucy Westgarth

