

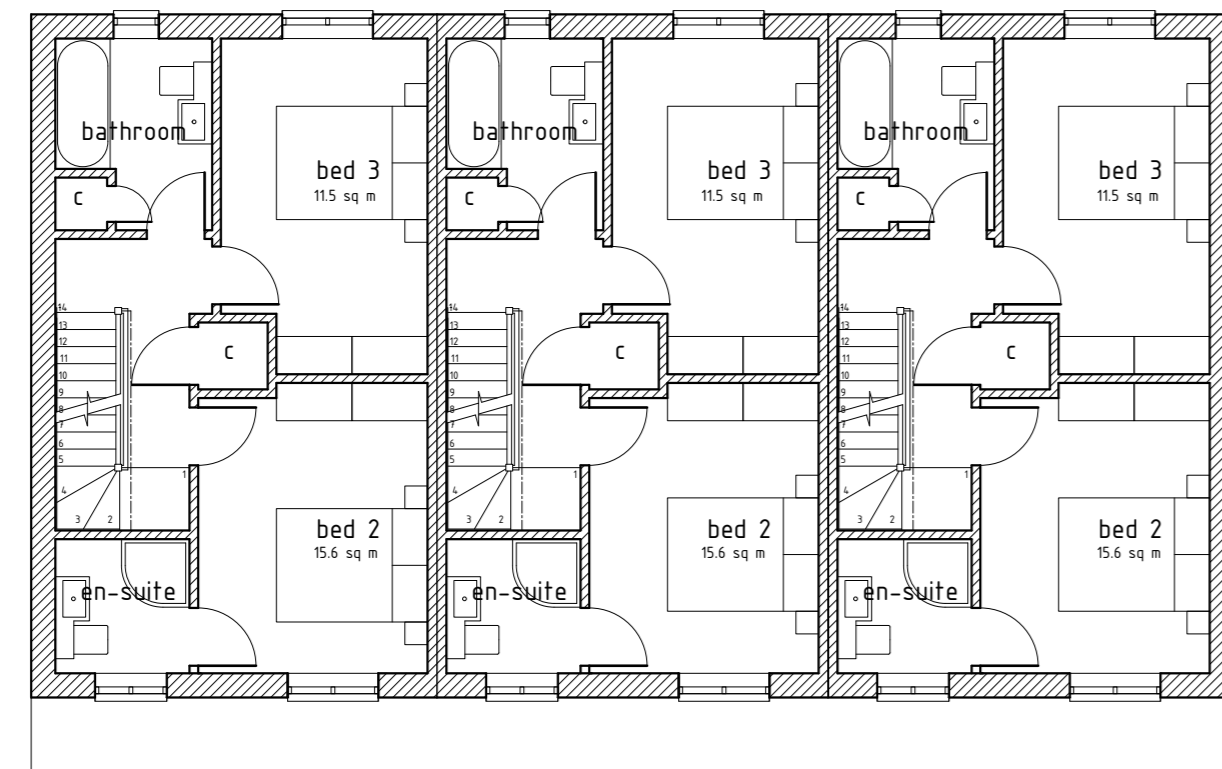
second floor plans



front



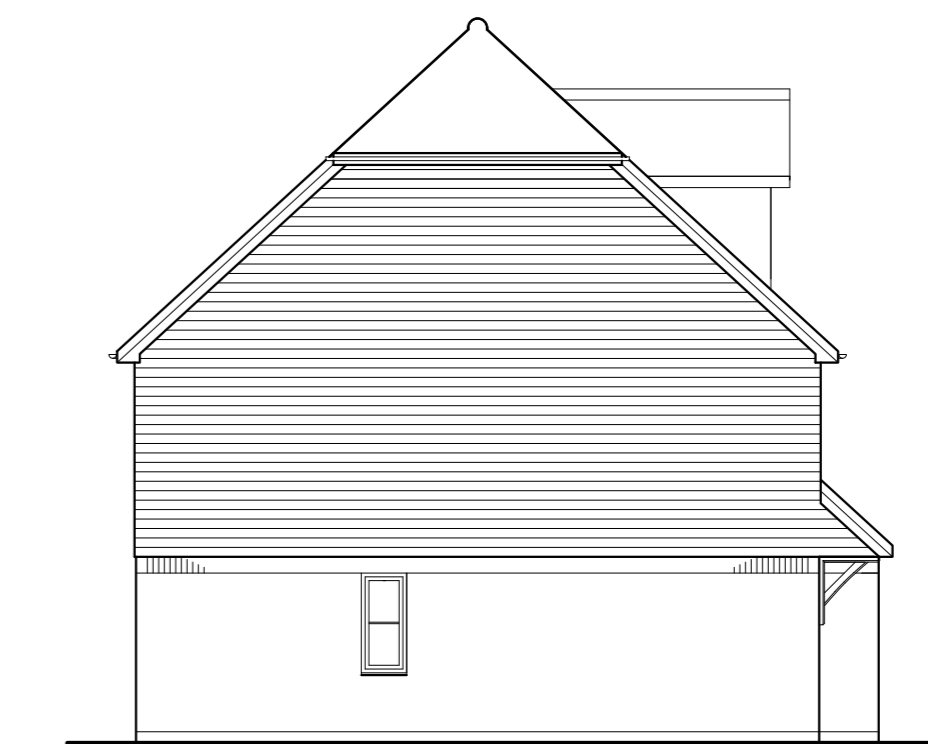
side



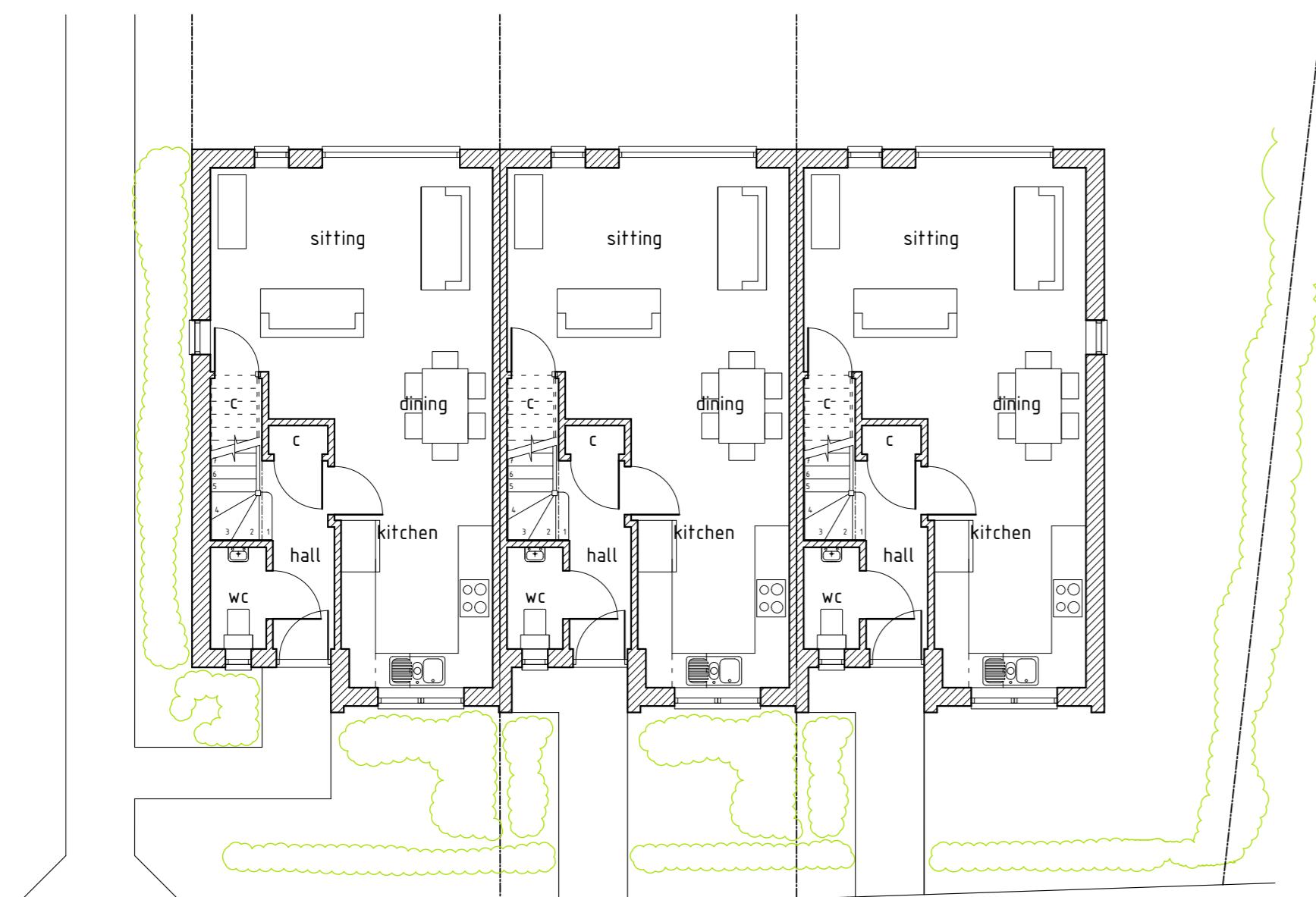
first floor plans



rear



side

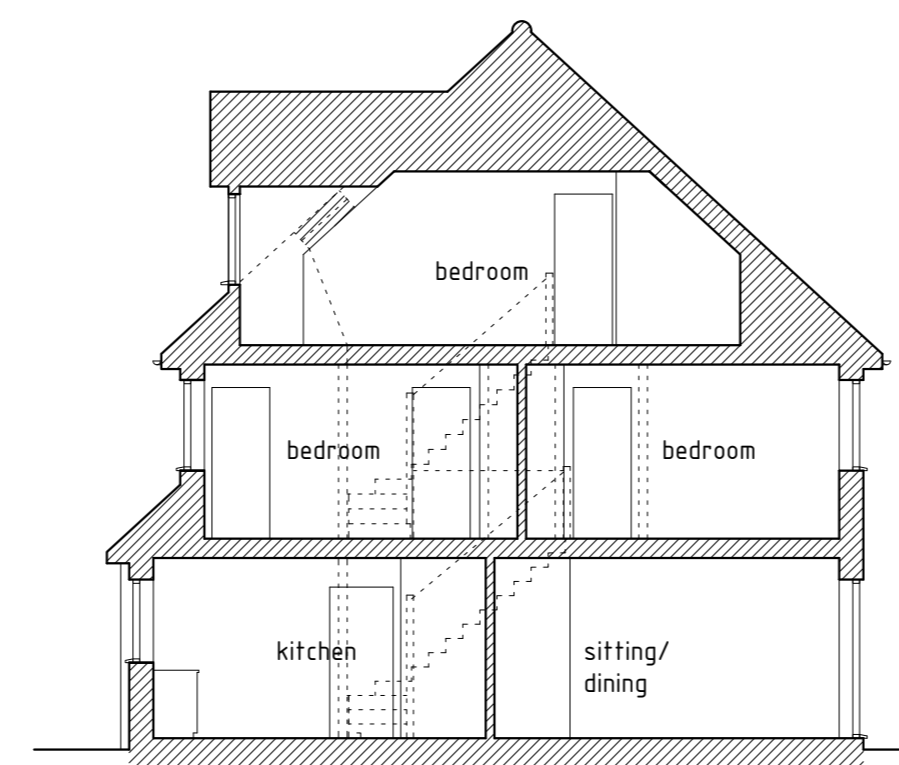
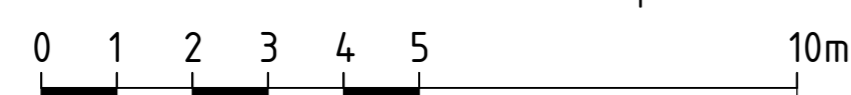


ground floor plans

gross internal floor area 110.2 sq m (108sq m)
(Minimum national described space standards in brackets)

PLOTS 6, 7, 8

gross external floor area 134 sq m
footprint 150.25 sq m (for three units)



typical section

Revision E 8 February 2021
Revision D 1 February 2021
Revision C 23 Sept 2020
Revision B 9 Sept 2020
Revision A 1 September 2020

draft issue 27 July 2020

Project
Proposed Development at
Ashwood Nursing Home
Heathfield Road
Burwash Common
East Sussex
TN19 7LT

Client
Artemis Design & Build Ltd

Title
Plots 6, 7, 8
3 Bedroom Terrace

Drawn Checked

Scale 1:100 at A1 Date July 2020

Drawing Number 1932/14
Final
Revision ABCD E

Roger Howells Dip Arch, BA(hons)
Architect
Sparks Oasthouse,
Staplecross Road,
Northiam, Rye, East Sussex
TN31 6JP
Tel: 01590 830345
Fax: 01590 831948
Email: roger@rogerhowells.com