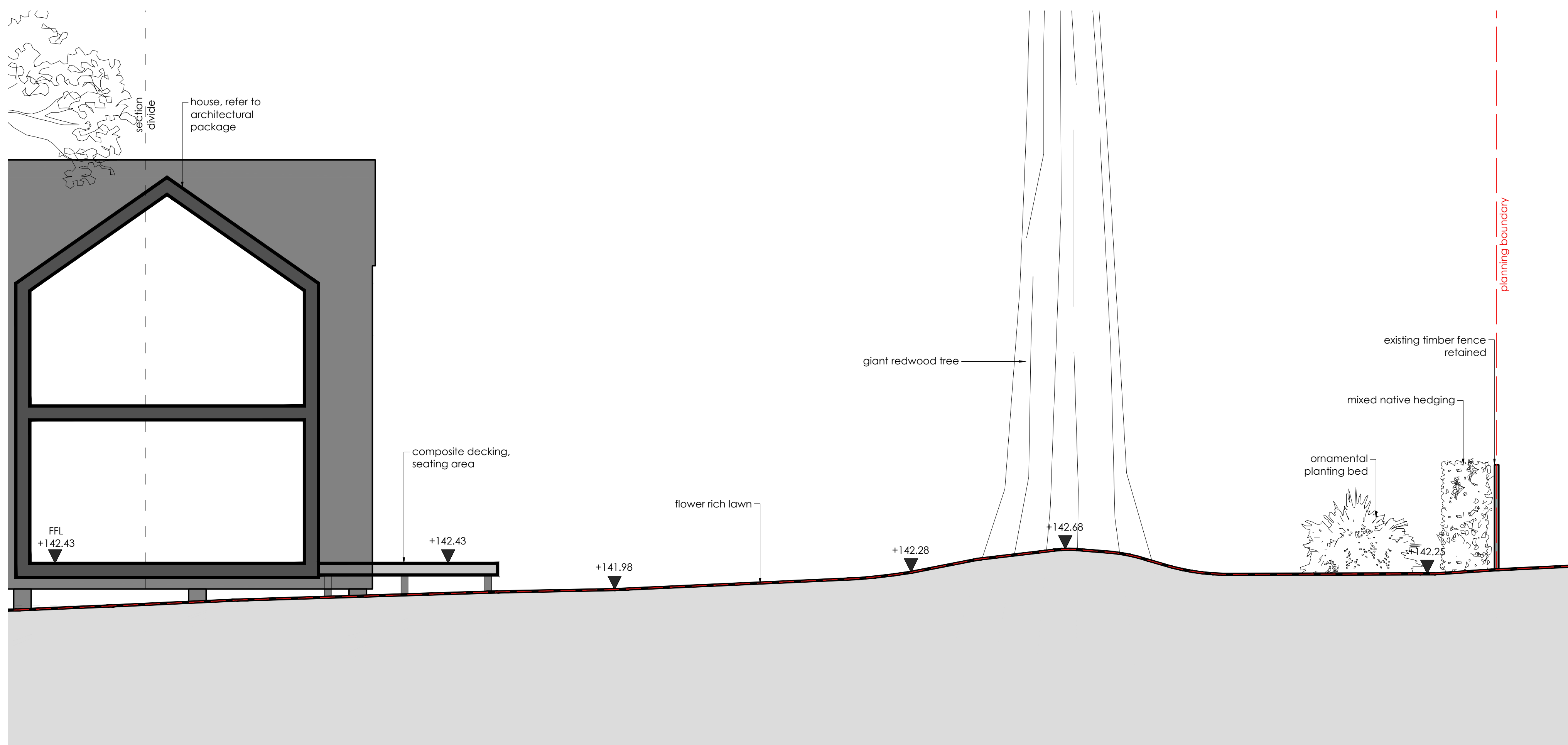


Location Plan  
not to scale



Revision	Initial	Date	Comments
A	MH	09.07.21	First issue
B	MC	12.01.22	Updated to reflect revised architectural layout and topographical information
C	MH	03.05.22	Location plan updated to indicate section B amendments

**Robert Bray Associates**  
Sustainable Drainage Consultants + Landscape Architects

Project name: Redwood, Tunbridge Wells

Drawing title: Proposed Sections 02

Status: Planning Date: 09.07.2021

Drawing no: RBA-RTW-552 Sheet: - Rev: C

Scale: 1:50 @A1 Drawn by: MH Approved by: KB