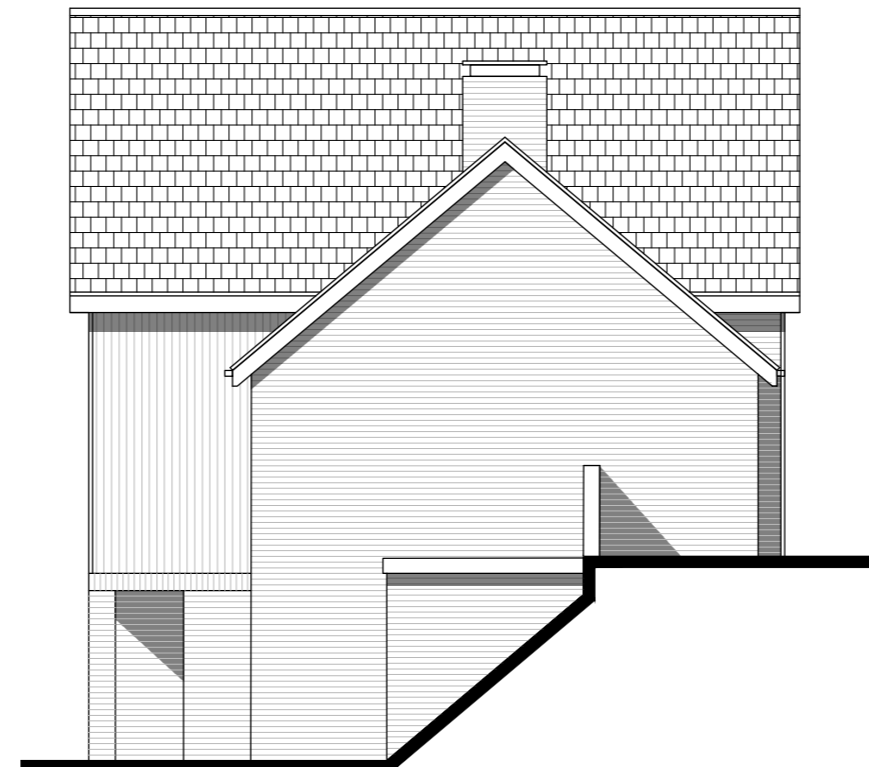


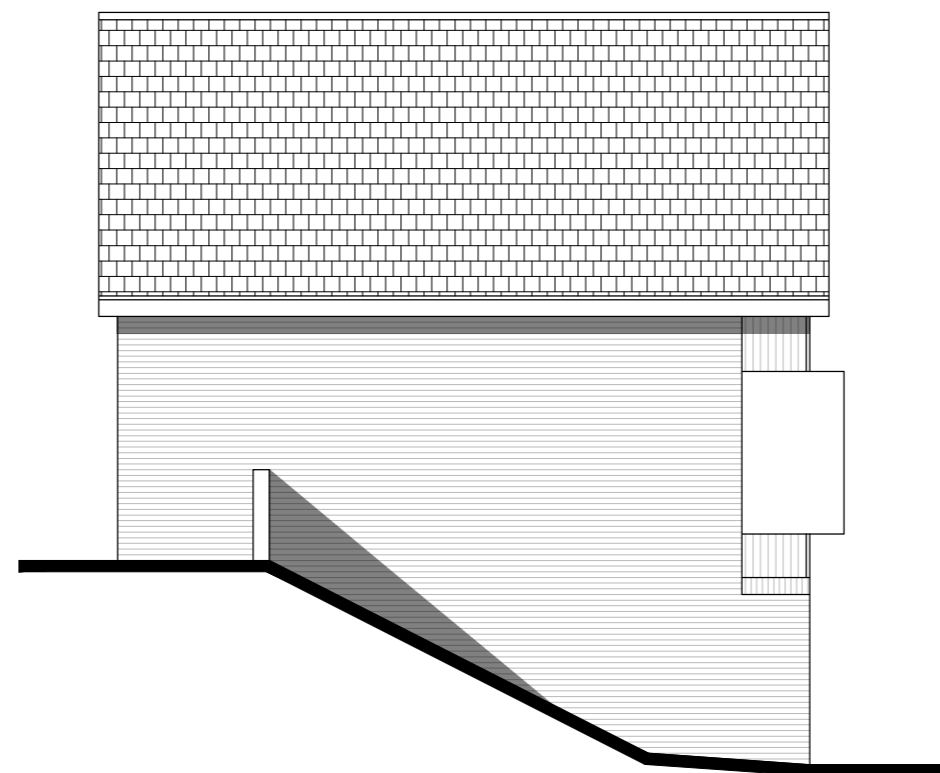
Front Elevation



Side Elevation



Rear Elevation



Side Elevation

MATERIALS SCHEDULE

- ① Red/Brown Mixed Stock brick
- ② Brick panels in flemish bond, with projecting heads, with brick to match main facade
- ③ Slate Roof
- ④ Dark Grey uPVC window frames
- ⑤ Dark Grey front door
- ⑥ Dark Grey garage door
- ⑦ Dark Grey square profile aluminium rainwater goods
- ⑧ GRC Cladding Panels

| Rev | Date     | Revision Details                                 | Dr | Ch |
|-----|----------|--|----|----|
| D   | 06.03.20 | Amendment to brick colour                        | GP | KE |
| C   | 28.01.20 | Amendment to provide barge board and cycle store | GP | KE |
| B   | 06.07.18 | Revised Annotations                              | NK | KE |
| A   | 23.05.18 | Planning Submission                              | KE | AK |

Rev Date Revision Details Dr Ch



**London:** 76 Great Suffolk Street  
London, SE1 0BL  
T 0207 928 2773 E london@eearchitecture.com  
**Sussex:** Brooklyn Chambers, 11 Goring Road  
Worthing, West Sussex, BN12 4AP  
T 01903 248777 E sussex@eearchitecture.com  
**Bristol:** Westworks, Colston Tower  
Colston Street, Bristol, BS1 4XE  
T 0117 214 1101 E bristol@ecestworks.com  
**ECE Architecture**  
www.eearchitecture.com

Client's Name  
**Persimmon Homes South East**

Job Title  
**Land at Reef Way, Hailsham**

Drawing Title  
**Elevations Sheet 1  
5 & 6**

Scale  
**1:100 @ A2**



| Drawn | Checked | Date     |
|-------|---------|----------|
| KE    | AK      | 26.04.18 |

| Job No | Drawing No | Rev |
|--------|------------|-----|
| 6491   | 206        | D   |

Status  
**APPROVAL**