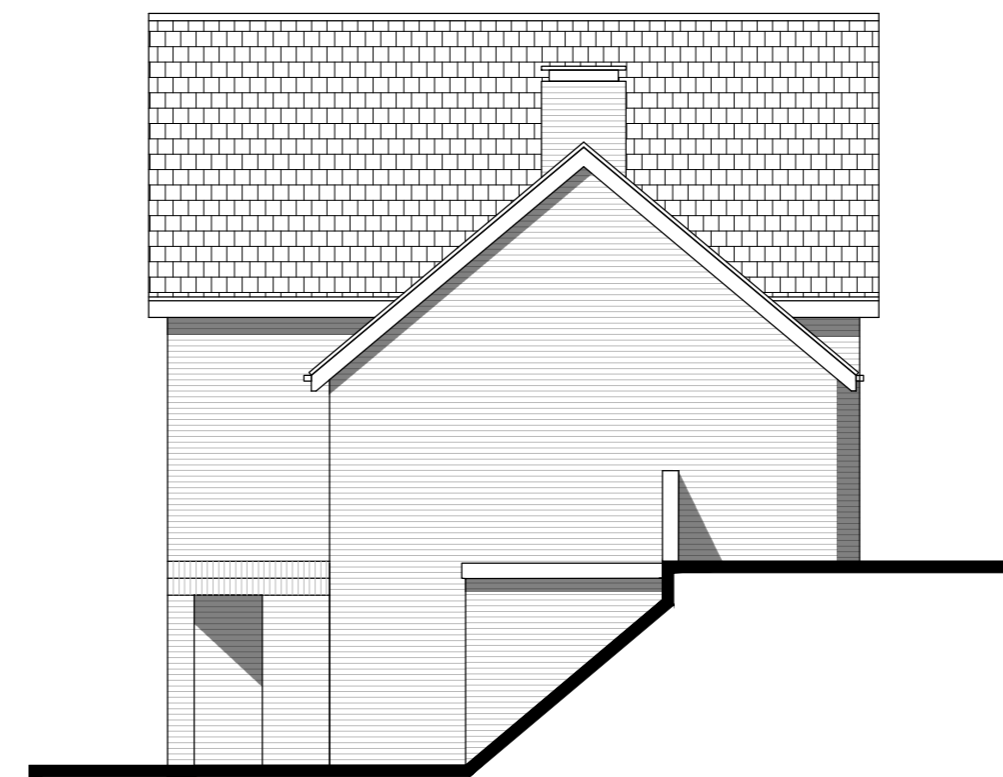


CDM 2015 Health & Safety Information

This information relates only to 'Significant Hazards' identified on this drawing and is to be read in conjunction with the Designer's Hazard Register.



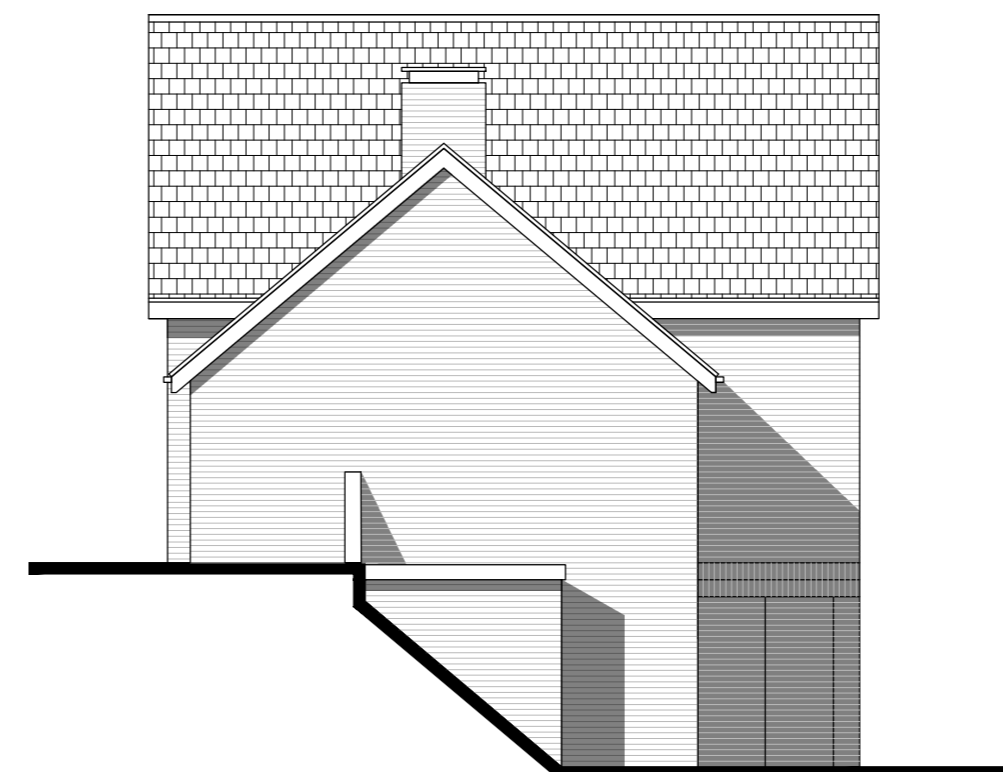
Front Elevation



Side Elevation



Rear Elevation



Side Elevation

MATERIALS SCHEDULE

- ① Red/Brown Mixed Stock brick
- ② Brick panels in flemish bond, with projecting heads, with brick to match main facade
- ③ Slate Roof
- ④ Dark Grey uPVC window frames
- ⑤ Dark Grey front door
- ⑥ Dark Grey garage door
- ⑦ Dark Grey square profile aluminium rainwater goods

Rev	Date	Revision Details	Dr	Ch
D	06.03.20	Amendment to brick colour	GP	KE
C	28.01.20	Amendment to provide barge board and cycle store	GP	KE
B	06.07.18	Revised Annotations	NK	KE
A	23.05.18	Planning Submission	KE	AK



London: 76 Great Suffolk Street
London, SE1 0BL
T 0207 928 2773 E london@eearchitecture.com
Sussex: Brooklyn Chambers, 11 Goring Road
Worthing, West Sussex, BN12 4AP
T 01903 248777 E sussex@eearchitecture.com
Bristol: Westworks, Colston Tower
Colston Street, Bristol, BS1 4XE
T 0117 214 1101 E bristol@ecestworks.com
ECE Architecture
www.eearchitecture.com

Client's Name
Persimmon Homes South East

Job Title
Land at Reef Way, Hailsham

Drawing Title
**Elevations Sheet 2
Plots 3 & 4**

Scale
1:100 @ A2



Drawn	Checked	Date
KE	AK	26.04.18

Job No	Drawing No	Rev
6491	207	D

Status
APPROVAL