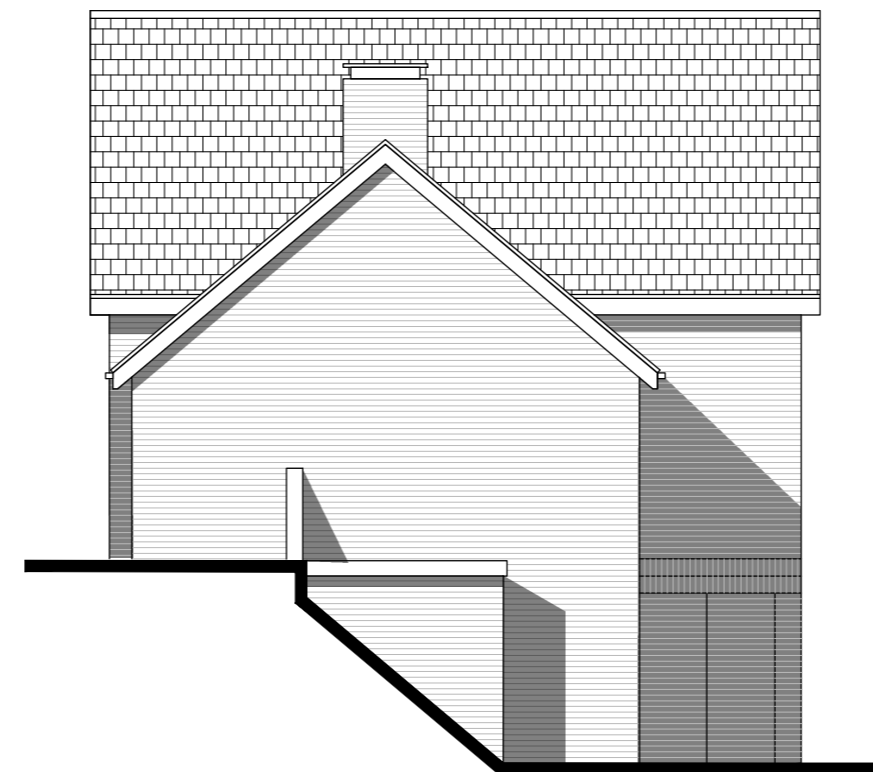




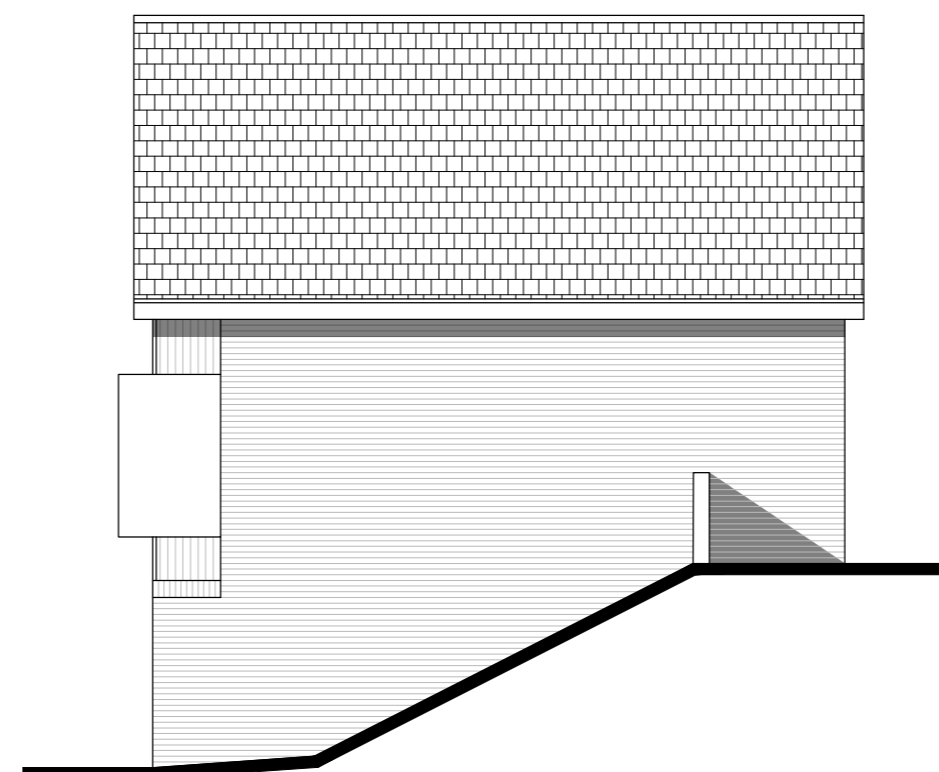
Front Elevation



Side Elevation



Rear Elevation



Side Elevation

MATERIALS SCHEDULE

- ① Red/Brown Mixed Stock brick
- ② Brick panels in flemish bond, with projecting heads, with brick to match main facade
- ③ Slate Roof
- ④ Dark Grey uPVC window frames
- ⑤ Dark Grey front door
- ⑥ Dark Grey garage door
- ⑦ Dark Grey square profile aluminium rainwater goods
- ⑧ GRC Cladding Panels

Rev	Date	Revision Details	Dr	Ch
B	06.03.20	Amendment to brick colour	GP	KE
A	28.01.20	Amendment to provide barge board and cycle store	GP	KE



**London:** 76 Great Suffolk Street  
London, SE1 0BL  
T 0207 928 2773 E london@eearchitecture.com  
**Sussex:** Brooklyn Chambers, 11 Goring Road  
Worthing, West Sussex, BN12 4AP  
T 01903 248777 E sussex@eearchitecture.com  
**Bristol:** Westworks, Colston Tower  
Colston Street, Bristol, BS1 4XE  
T 0117 214 1101 E bristol@ecestworks.com  
**ECE Architecture**  
www.eearchitecture.com

Client's Name  
**Persimmon Homes South East**

Job Title  
**Land at Reef Way, Hailsham**

Drawing Title  
**Elevations Sheet 2  
1 & 2**

Scale  
**1:100 @ A2**



Drawn	Checked	Date
KE	AK	26.04.18

Job No	Drawing No	Rev
6491	210	B

Status  
**APPROVAL**